

## 180 degree Peeling Tester

Peel strength of tape or Emboss career tape can be tested easily with IPT.  
An software included can make a graph of test results, and compute maximum, minimum and average value.

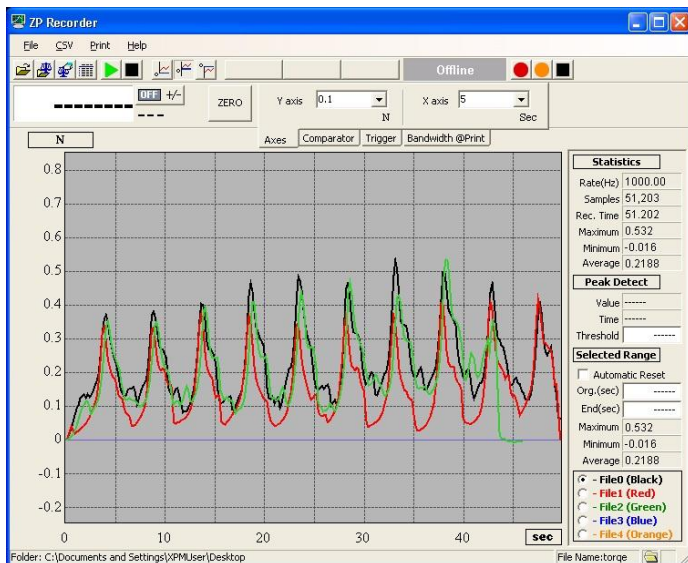
IPT200-5N: For Emboss career tape

IPT200-20N: For film or tape

IPT200-50N: For film or tape



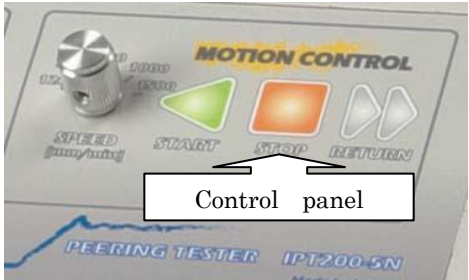
IPT200-5N



### Software included

Transition of peel strength can be drawn into a graph easily, and maximum, minimum and average value can be computed. 5 data at maximum can be displayed in a table, which is useful for comparing data.


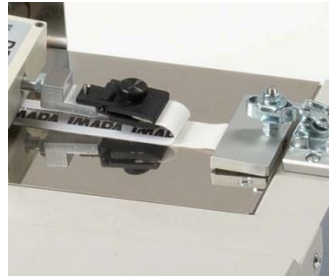
IMADA CO.,LTD  
180 degree Peeling Tester

Feature 1	Feature 3														
<p>Easy to control All you have to do is place sample and push a start button.</p>	<p>Computing average value of peel strength The included software can make a graph of force transition, and compute maximum, minimum, and average value.</p>														
 <p>Control panel</p>	<p>Statistic data A software included</p> <table border="1" data-bbox="1166 443 1433 712"> <thead> <tr> <th colspan="2">Statistics</th> </tr> </thead> <tbody> <tr> <td>Rate(Hz)</td> <td>1000.00</td> </tr> <tr> <td>Samples</td> <td>51,203</td> </tr> <tr> <td>Rec. Time</td> <td>51.202</td> </tr> <tr> <td>Maximum</td> <td>0.532</td> </tr> <tr> <td>Minimum</td> <td>-0.016</td> </tr> <tr> <td>Average</td> <td>0.2188</td> </tr> </tbody> </table>	Statistics		Rate(Hz)	1000.00	Samples	51,203	Rec. Time	51.202	Maximum	0.532	Minimum	-0.016	Average	0.2188
Statistics															
Rate(Hz)	1000.00														
Samples	51,203														
Rec. Time	51.202														
Maximum	0.532														
Minimum	-0.016														
Average	0.2188														

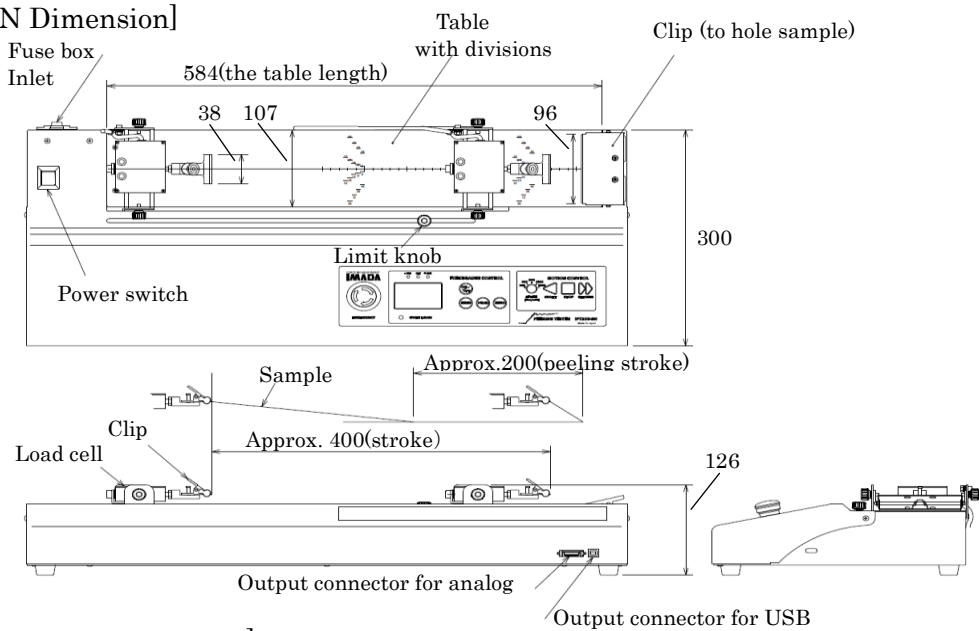
Specifications			
Model	IPT-200-5N	IPT-200-20N	IPT-200-50N
Capacity	5N	20N	50N
Resolution	0.001N	0.01N	
Accuracy	±0.2%F.S. ±digit		
Overload capacity	Approx. 150%F.S (LED blinks and buzzer warns at 150% or more)		
Sampling rate	1000 times/sec (max)		
Measurement speed	120, 300, 500, 1000, 1500mm/min (5 kinds of speed are selectable)		
Stroke of load cell	Approx.400mm (Stroke to peel: Approx.200mm)		
Peeling angle	165 ~180 degree (Height and angle are adjustable)		
Sample width	8-88mm (8,12,16,24,32,44,56,72,88 mm table with divisions)	1-20mm (*2) (Table without divisions)	
Thickness	Up to 0.5mm	Up to 0.2mm	
Safety functions	Emergency switch, overload stop function, stroke limit switch.		
Power supply	AC100-240V(*1)		
Weight	Approx.11kg		
Environment	Temperature: 0-40 degree Celsius Humidity: 20-80%RH		
Accessories	Driver CD-ROM, ZP-Recorder(graph making software), Power cable, Inspection Certificate, Attachment for clamping sample (5N: Clip, 20, 50N: Film grip)		

\*1 Please specify the voltage when you order

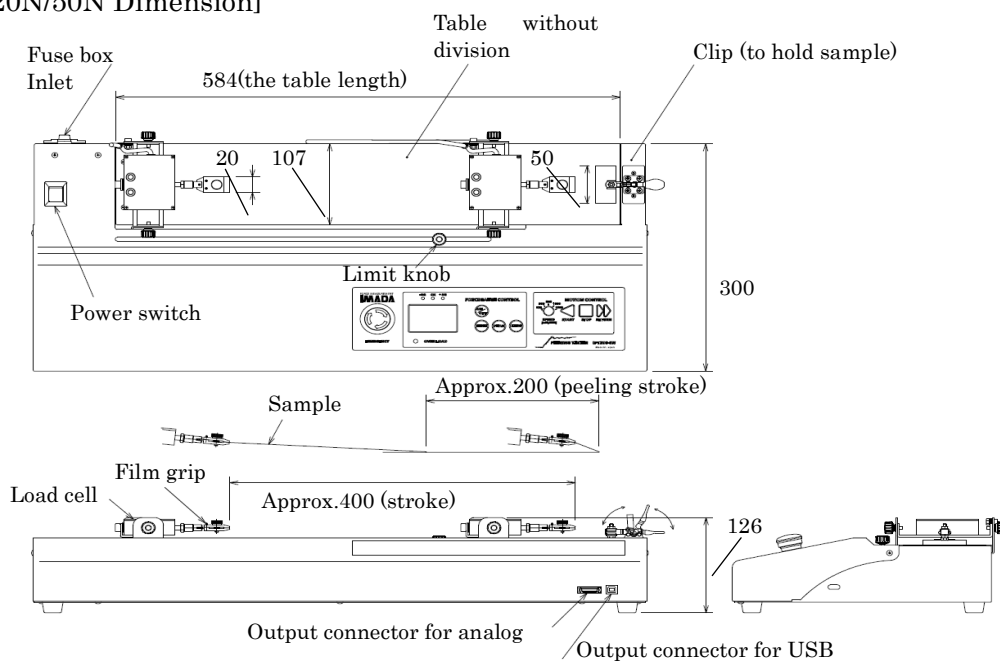
\*2 Please feel free to contact us in the case where your sample is wider than 20mm.

Measurement example		
Peeling test of Emboss career tape with IPT-5N	Peeling test of tape with IPT200-20N/50N	
		
JIS C 0806-3 (2010)	Packaging of car components Chapter 3	IPT200-5N

[IPT200-5N Dimension]



[IPT200-20N/50N Dimension]



Software	
Recording of measurement results	Sampling speed: Max 1000/sec
	Up to 5 graphs can be displayed on the same table
	Able to start recording automatically at the setting value.
Graphing	Data can be saved by ZP-Recorder special extension, or CSV (Compatible for Microsoft office Excel).
	Able to save and print data.
OS available	Windows 2000, XP, Vista, 7(*)
Operating environment	Microsoft .NET Framework2.0 Microsoft Internet Explorer 5.01 or later

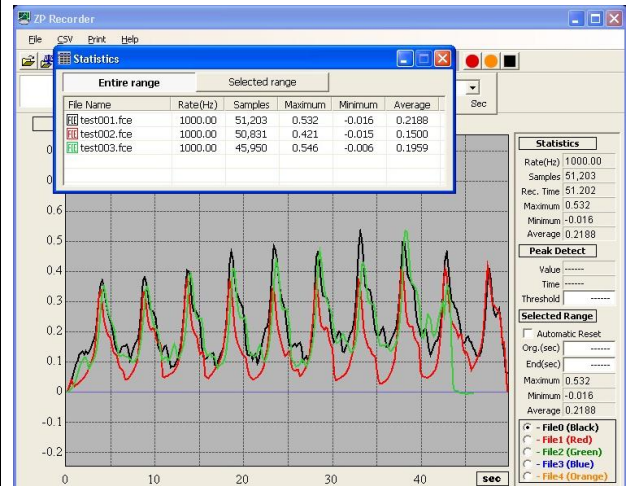
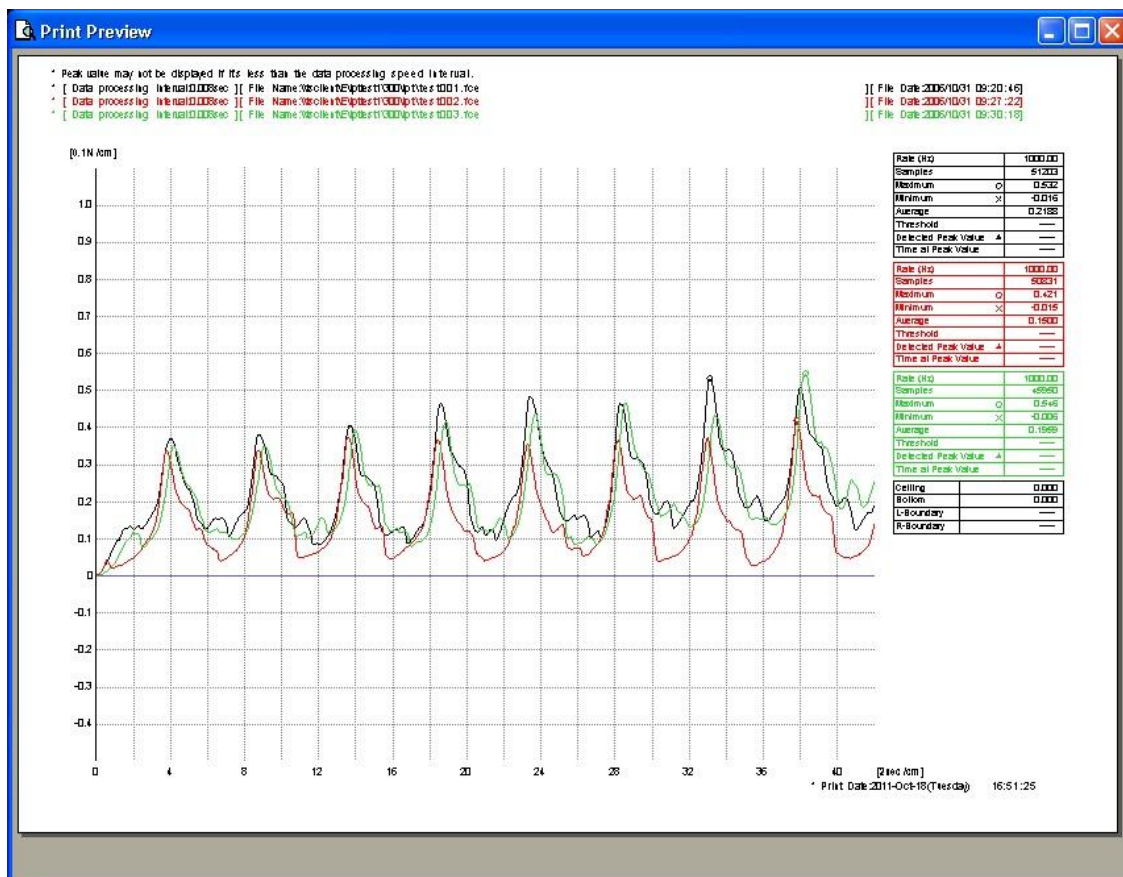


Image plane of software

(\*) 64bit version is not available for 2000 and XP.



Printing image

IMADA CO.,LTD  
180 degree Peeling Tester

**[Cautions]**

- \*The contents may be changed without notice in advance.
- \*These products are designed for measurement purpose only.
- \*Do not copy the contents without permission.
- \*Some samples could not be held by the grips depending on their materials or shapes.