
FA PLUS

High speed sampling (2000 times/sec)

Various measurements with load cells

Easy to draw force-displacement curve with operation equipment.



- * Use as force-displacement unit: F-S Master, which is complete unit to make a graph of force-displacement curve.
- * Not included load cells. Please select one of our load cells to purchase this product. Products are calibrated and shipped with the selected load cell.

[Use]

Used for strength test for various materials (tensile test, compression test, shearing test, peeling test etc)

[Feature]

- More precise value is measured especially in impulse experiment by high-speed force sampling (2000 times/sec).
- Separated load cell is efficient when used for dangerous measurement or used in small space.
- High efficiency of measurement as factory automation system with external/output signal.
- Use with various load cells by IMADA.
- If sensor is broken, change to spare load cells swiftly (Need to calibrate by standard weight.)

[Specifications]

Item	Operation
Measurement unit	N(kN), kgf(gf), lbf(ozf)
Display style	Track/Peak mode select
Display	4digit LCD
Sampling rate	2000 times/sec
LCD display update	10 times / sec
Capacity	Approx. 200% F.S. (More than 110 %)
Force Accuracy	-0.2~0.2%F.S -1~11digit (with DPU load cells)
Use heat	0~+40 degrees
Humidity capacity	20~80%RH
Power	AC100V~240V Free input
Functions of communication output	USB, Serial (RS232C), Analog (-2~+2V), Various comparator output (Total 5), Overload output.
Other functions	Digital filter HI/Lo, Auto zero clear etc
Trimmer	ZERO, GAIN for calibration
External connecting switch	ZERO, SEND, PEAK, CONF
Attachment	Instructional manual, Power cable, Spare fuse, USB cable, Driver CD-ROM,
Dimension	210*160*99mm (Except projection)
Weight	1.5kg (body)

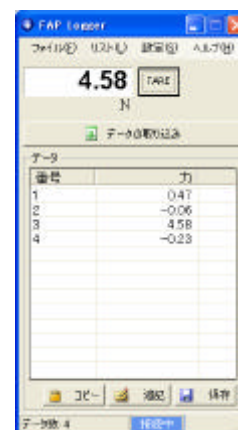
[Software of force value reader: FAP Logger]

Driver CD-ROM includes free software FAP Logger for data management.

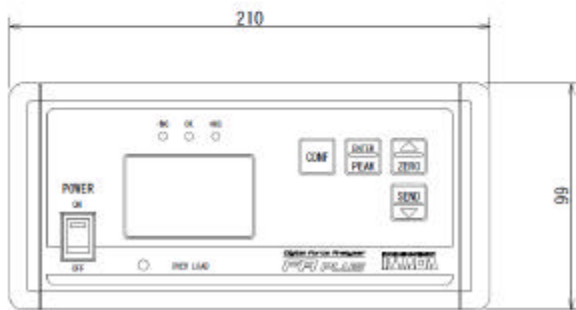
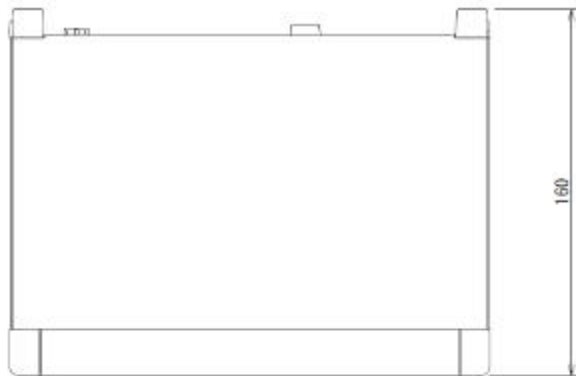
Connect FA Plus to computer with USB cable.

Send measurement value (+peak, -peak or present force value) to computer each time. Save measurement value in CSV file.

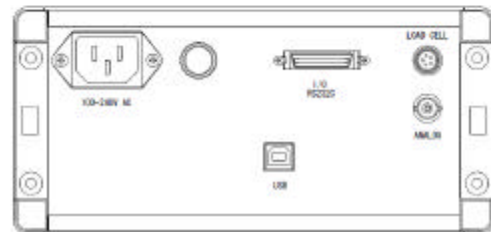
* FAP Logger is free software. Your computer may not handle it.



[Dimension]



Front



Back

Please contact us for the attachment of adaptor to your equipment.

[Caution]

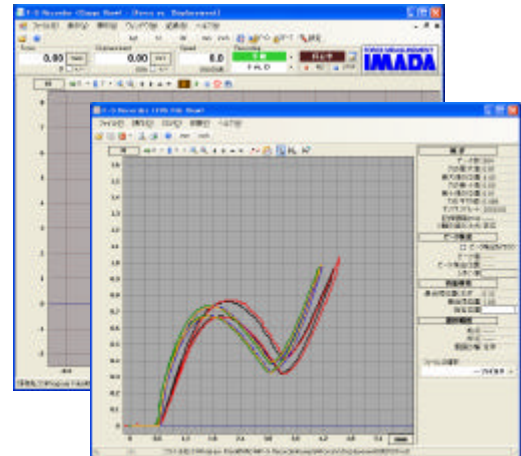
- Not included load cells. Please select into our load cells.
- It cause a sensor damage if the force of bending, twisting and exceeding capacity is applied, regardless of on/off power supply,
- Avoid using under the condition of sudden change of temperature, extremely hot or humid, wet or dusty places.
- The content is subject to change without notice.
- Although based on operating frequency or force range, measurement accuracy deteriorates little by little.
- We recommend periodical calibration.

[Example of measurement unit with FA-PLUS 1]

Test Unit: F-S Master series is easy to draw force-displacement curve.

FA PLUS is optimum equipment to examine correlation of force and displacement by using load cell, measurement stand and software.

* See the specifications for details.



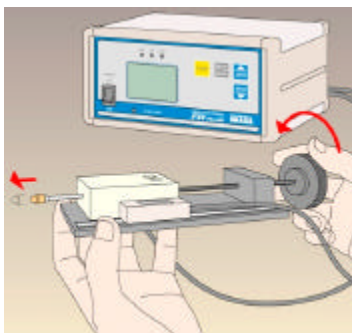
Force measurement software: F-S Recorder

Force-displacement measurement unit: F-S Master Attachment and computer are not included.

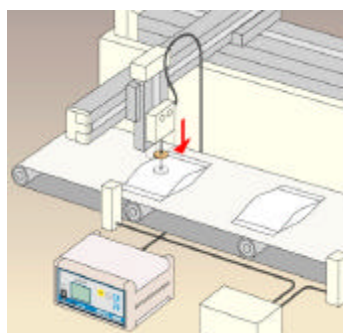
[Example of measurement unit with FA-PLUS 2]

There are USB, RS232C, comparator output, overload output and external point as functions of external input/output.

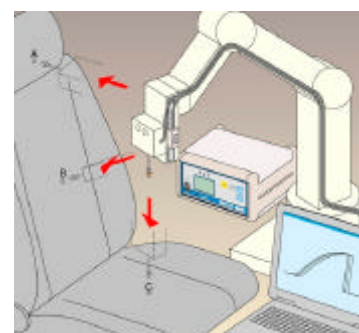
It is programmable and measurement can be more efficient using with PLC and so on.



Handy measurement



Automated endurance test



Feeling test at flexible position