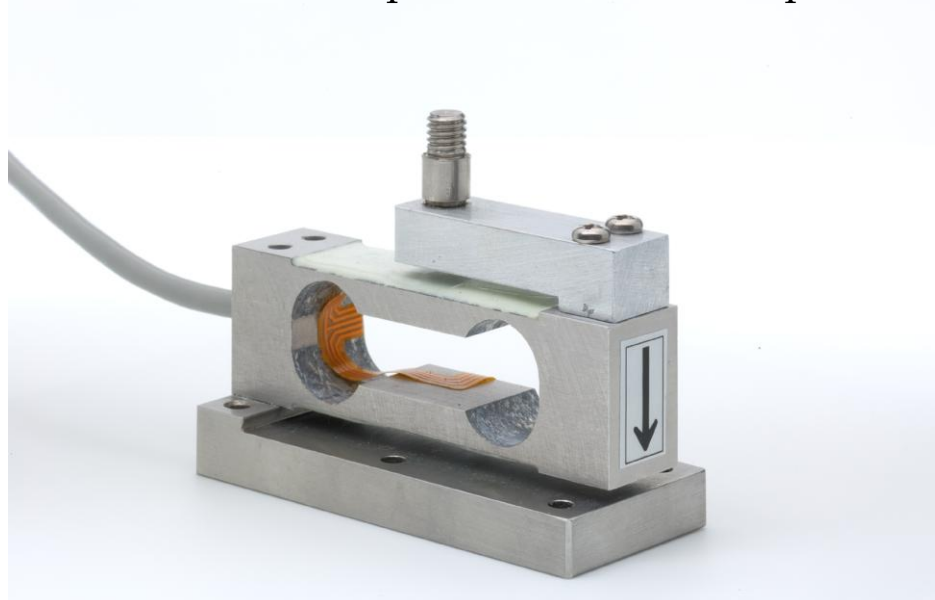


Load cell for FA PLUS and ZPS series

Load cell -water proof type- WP-50N

Suitable for tensile and compression test at wet place



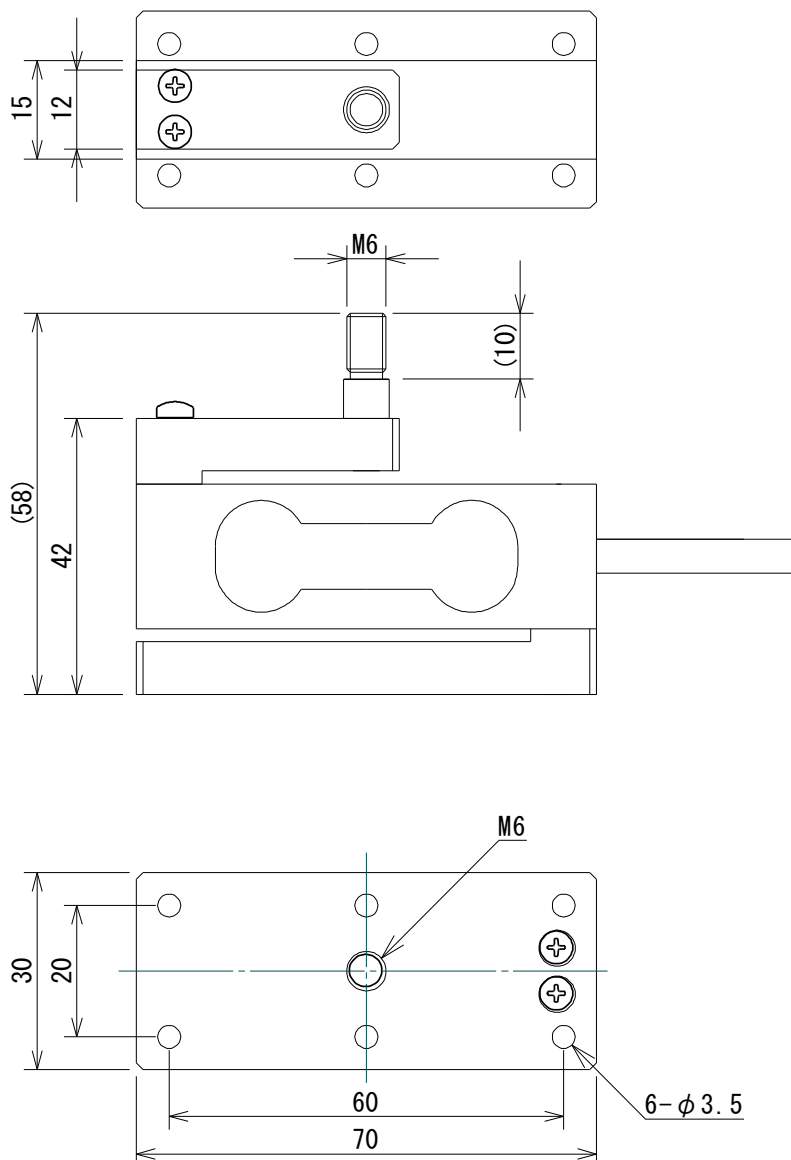
[Use]

- Suitable for tensile and compression test at wet place.

[Specifications]

Model	WP-50N
Feature	Water proof type. (corresponds to IP65)
Capacity	50N
Output	1.8 to 2.2mV / V
Nonlinearity	Within +/-0.5%R.O.
Hysteresis	Within +/-0.5%R.O.
Recommended voltage (permissible applied voltage)	Less than DC 5V
Input/output resistance	342~418 ohm
Permissible overload	150%
Operating temperature	0 to 40 degree Celsius
Measurement shaft diameter	M6 P1.0
Weight	Approx. 210g(with cable and connector)
Cable	300mm (with connector)

[Dimension]



Please order with FA PLUS (Force amplifier) or ZPS series (digital force gauge of sensor separate model).

Ex. FA PLUS-WP-50N

ZPS-WP-50N

Calibration is done before shipping.

[Caution]

- The contents may change without notice.
- Please pay close attention for the installation of the load cells.
- Never apply strong force or impact especially on the sensing direction.
- Please avoid bending and twisting, when you attach measurement shaft to object.
- Do not use in the condition of rapid temperature changes, high temperature, and dusty place.