
SH Series [SH-100W/SH-300W]**Horizontal Model Manual Test Stand**

SH-100W

(Force gauges are sold separately.)

[Applications]

- Various material testing for medium load (Measuring of tensile strength, compressive strength, shearing strength and etc.)
- Assessment test for small mechanical parts such as electric / electronic parts (measuring the strength of soldering, the pull-off force value of electrical leads and etc.)
- Peel test for bonding area or heat seal.

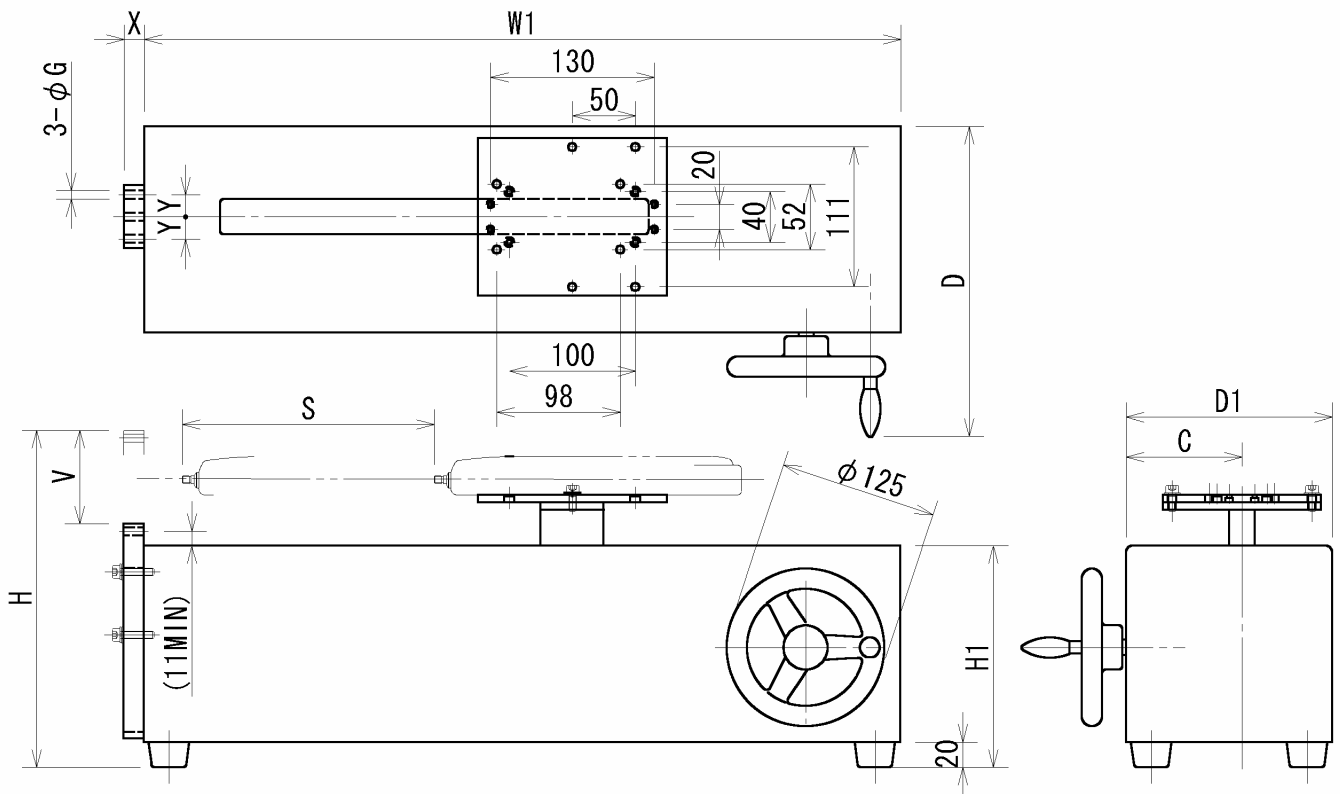
[Features]

- The stable applied pressure is obtained by the fine movement through thread feed system of Handle Wheel.
- The sliding jig table is adapted for jig mounting alignment.

[SH-100W/SH-300W Specifications]

Model	SH-100W	SH-300W
Capacity	1000N	3000N
Stroke	200mm	
Drive Distance	Handle Wheel 1.2 mm/rev	
Moving distance of jig table	75 mm (up and down)	45 mm (up and down)
Gauge mounting plate dimension	W150×D125×H6 mm (Refer to the following drawings for gauge mounting hole pitch)	W170×D75×H9 mm
Dimension	W616×D243×H(267) mm	W705×D283×H(274) mm
Weight	17 kg	20 kg
Options	(-S) Digimatic length meter (-L***) Extended stroke (Please contact us for detail)	
Accessory	Force gauge mounting bolts	

[Dimension]



Unit (mm)	C	D1	D	Diameter G	H1	S	V	W1	X	Y
SH-100W	92	163.5	245	6.5	175.6	200	75	600	16	17.5
SH-300W	102	204	283	11	193	200	45	605	100	-

[Note]

- Force gauge (sold separately) is required for actual measuring. Please order Imada products.
- Various optional attachments are available for different types of measurement.
- All information is subject to change without prior notice.