

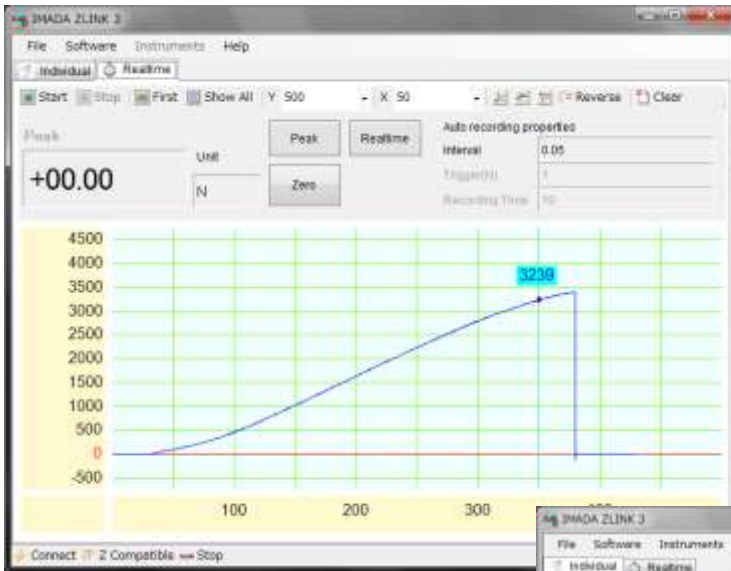
Data Acquisition Software

Z-LINK3

RS232C

Easy graphing of Force – Time.
Recording time period can be set.

Software for RS232C Z-LINK3



Analyze of Force
Easy analyze of force change with force – time graph. Place a mouse pointer on graph and the value is displayed.

Peak Mode
Enable to list up peak value only.
Enable to transfer memory data from the force gauges with memory function.

Value	Unit
7.11	N
4.31	N
3.44	N
2.39	N
-6.48	N
3.48	N
-5.75	N
-2.94	N
4.55	N
4.35	N
1.39	N
-6.95	N
3.91	N
3.88	N
-6.62	N
5.52	N
-2.3	N
0.14	N
-3.97	N
3.79	N

Summary statistics:
Average: -0.638
Max: 5.52
Min: -6.17
Number: 30

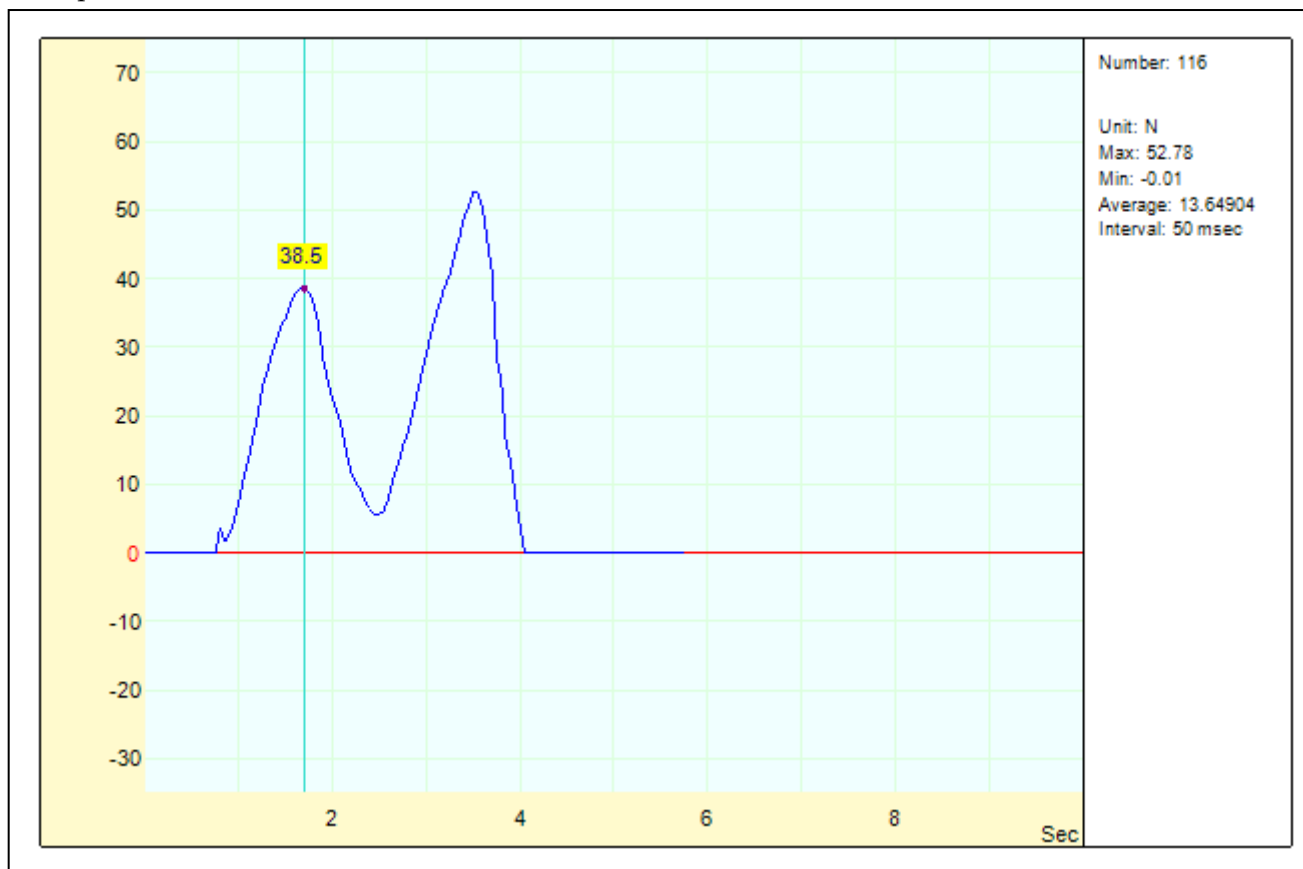
Feature 1	Feature 2
<p>Automatic Recording</p> <p>Automatically start and stop recording depending on trigger force value. Recording time period can be settable, too.</p>	<p>Force Gauge Function Setting</p> <p>Some functions of force gauge can be set from software, such as comparator and units.</p>

Specifications				
Model	ZLINK3			
OS Environment	Windows 2000 SP3 / XP SP2/ Vista (32 bit only) /7			
Operation Environment	Microsoft. NET Framework 2.0 Microsoft. Internet Explorer 5.01 or later			
Interface	PC with RS 232C port (*)			
Sampling Speed	Max. 50 data/sec.			
Resolution	Force: Depends on capacity of load cell. (4 digits with sign) (Ex.) Load cell with 5N capacity: 0.001N			
Data Save	CSV file (*) (Compatible with Microsoft Excel) (*)Number of saved data differs depending on environment of Excel.			
Corresponding Gauges	DS2 series 	Z2 series (Z2, Z2H, Z2S) 	HTG2 series 	DTX2 series
Cable	CB-203	CB-204	CB-204	CB-204

*Some PC may not have RS232C port. In this case, please use USB port with an adapter between RS232C and USB. (We don't deal with the adapter.)

*Please ask your local distributor or us about old models.

[Sample of Print Preview]



[Note]

*The contents may be changed without notice in advance.

*Do not copy and use the contents without authority.

[Caution]

*This product is designed to use with digital force gauges and cables.

*This product is protected by both Japanese and national law of copy right. It is banned to copy and distribute all or some part of the contents.

*We do not accept return after shipment. Please check the operation condition and OS environment.