

## Attachments for DTXS/DTXA series

- Enables to select from various attachments to suit measurement samples
- Combine with DTXS/DTXA series (separately sold) for various torque measurement, such as opening torque test of screw caps and torsional durability test

Various attachments to measure a wide range of samples are available.



Standard Table



Light Weight Wide Table






Pin Chuck



Spout Pouch Cap  
Opening Test Fixture




### ■ Standard Table

Standard Table Standard Pin DT-TB (*1)	Standard Table Notch Pin DT-TB-01	Standard Table Long Clamp Pin DT-TB-02
		
<p>Enables to fix PET bottles, cans, bins and so on.</p>	<p>Ideal for fixing slippery samples such as aluminum cans and plastic containers.</p>	<p>Ideal for fixing tall samples such as circuit boards, camera lenses and liquor bottles.</p>
<ul style="list-style-type: none"> <li>• Standard Table Capacity: 10N-m Allowable sample diameter: φ20 to 160mm Table weight: Approx.1.3kg Table material: Steel and Aluminum</li> <li>• Standard Pin Pin weight: Approx.28g/pcs Pin material: Stainless-steel and Urethane</li> </ul>	<ul style="list-style-type: none"> <li>• Standard Table Capacity: 10N-m Allowable sample diameter: φ20 to 160mm Table weight: Approx.1.3kg Table material: Steel and Aluminum</li> <li>• Notch Pin Pin weight: Approx.69g/pcs Pin material: Stainless-steel</li> </ul>	<ul style="list-style-type: none"> <li>• Standard Table Capacity: 10N-m Allowable sample diameter: φ20 to 160mm Table weight: Approx.1.3kg Table material: Steel and Aluminum</li> <li>• Long Clamp Pin Pin weight: Approx.67g/pcs Pin material: Stainless-steel and Urethane</li> </ul>

\* Standard Table and Pins cannot be used for torque gauges with capacity of 0.5N-m.



\*1 Standard Table and Standard Pins are included in DTXS-2/5/10N and DTXA-2/5/10N packages. The included attachments (Standard Table / Pins) are exchangeable to other options. Refer to the specifications of DTXS/DTXA series for details.

**[Pins]** The set of Pins are available for replacement for purchase separately.

Standard Pin TB-P	Notch Pin TB-01P	Long Clamp Pin TB-02P
		
<p>Urethane made pins. It is ideal for gripping plastic made samples such as bottle caps.</p>	<p>Stainless made pins. It is ideal for gripping samples such as resin made connectors.</p>	<p>Urethane made pins. It is ideal for fixing slim samples such as cosmetic containers.</p>


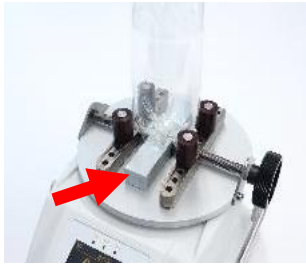
\* Each Pins are sold in set of 4.

**[Toggle Clamp for DT-TB]**

	Features
	<p>The same size samples can be easily replaced by simply operating the one-touch lever. It is no need to adjust the DT-TB's handle, which helps improve the efficiency of repeated tests, such as cap opening torque check tests.</p> <p>Model: <b>TC-DT-5N</b>            Capacity: 5N-m            Allowable sample diameter: 20-130mm*            Weight: Approx. 207g</p> <div style="text-align: right;">             Testing image         </div>

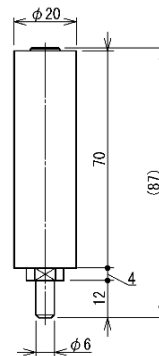
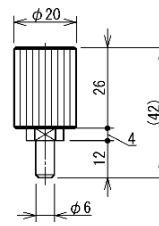
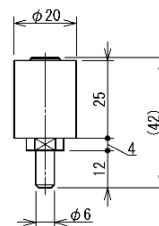
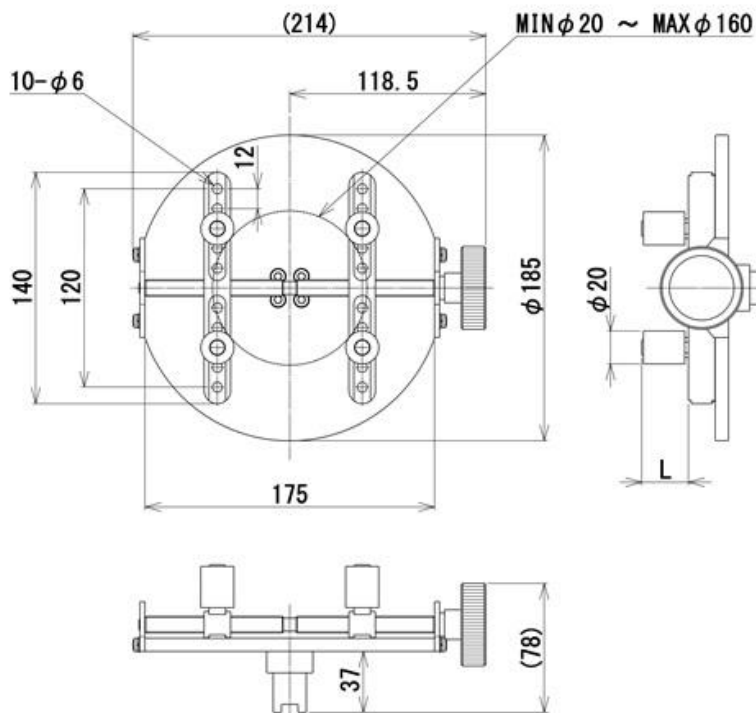
\* For the sample sizes that cannot be handled by the standard products, we also offer customized services. Please contact us for details.

**[Sample Stage]**

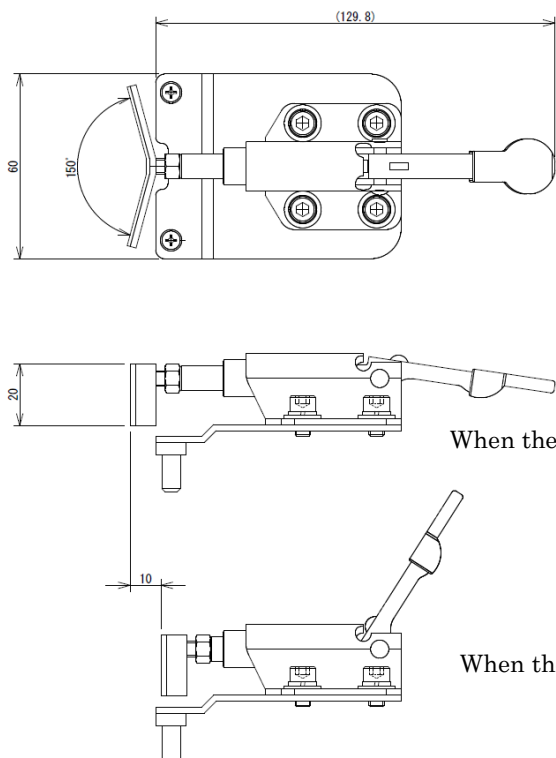
	Features
	<p>Used on the Standard Table DT-TB series to stabilize the sample.</p> <p>Model: <b>TB-SP</b>            Weight: Approx.130g            Material: Aluminum</p> <div style="text-align: right;">             Setting image         </div>

**[Dimensions]**

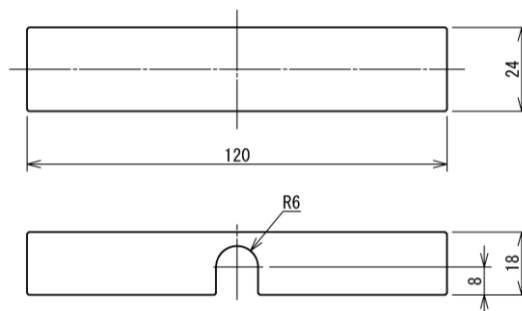
**DT-TB**



**TC-DT-5N**






**TB-SP**






Unit: mm

■ **Small Table**

Small Table Standard Pin <b>DT-ST</b>	Small Table Notch Pin <b>DT-ST-01</b>	Small Table Long Clamp Pin <b>DT-ST-02</b>
		
Suitable for measuring small samples such as eye drop lids.	Ideal for firmly fixing samples such as connectors made of resin.	Ideal for fixing slim samples such as cosmetic containers.
<ul style="list-style-type: none"> <li>• Small Table Capacity: 5N-m Allowable Sample Diameter: φ7 to 50mm Weight: Approx.370g Material: Steel and Aluminum</li> <li>• Standard Pin Pin weight: Approx.3g/pcs Pin material: Aluminum and Urethan</li> </ul>	<ul style="list-style-type: none"> <li>• Small Table Capacity: 5N-m Allowable Sample Diameter: φ7 to 50mm Weight: Approx.370g Material: Steel and Aluminum</li> <li>• Notch Pin Pin weight: Approx.10g/pcs Pin material: Stainless-steel</li> </ul>	<ul style="list-style-type: none"> <li>• Small Table Capacity: 5N-m Allowable Sample Diameter: φ7 to 50mm Weight: Approx.370g Material: Steel and Aluminum</li> <li>• Long Clamp Pin Pin weight: Approx.8g/pcs Pin material: Aluminum and Urethan</li> </ul>

\* Small table and pins cannot be used for torque gauges with capacity of 0.5N-m.

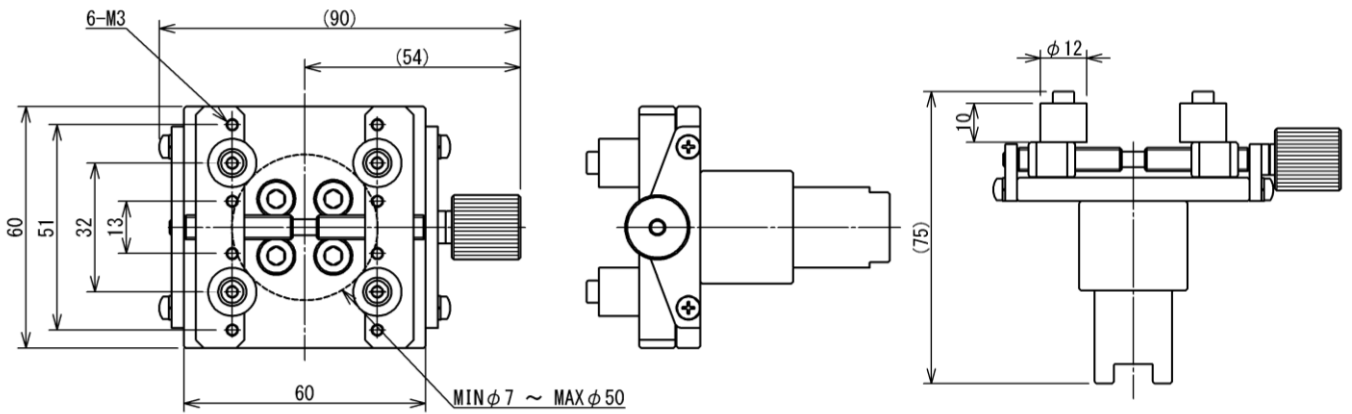
**[Pins]** The set of Pins are available for replacement for purchase separately.

Standard Pin <b>ST-P</b>	Notch Pin <b>ST-01P</b>	Long Clamp Pin <b>ST-02P</b>
		
Urethane made pins. It is ideal for gripping plastic made samples such as bottle caps.	Stainless made pins. It is ideal for gripping samples such as resin made connectors.	Urethane made pins. It is ideal for fixing slim samples such as cosmetic containers.

\* Each Pins are sold in set of 4.

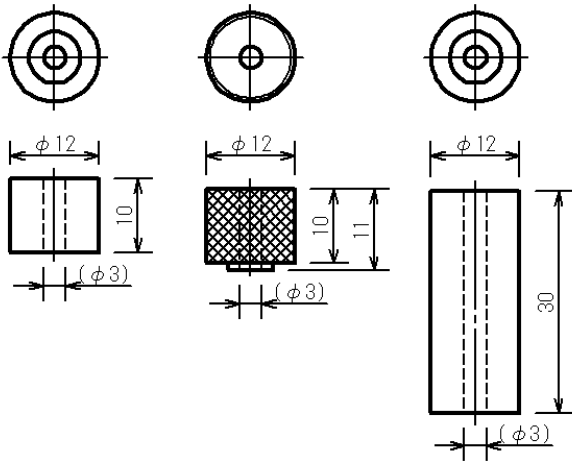
\* The Pins are common parts for the Small Table / Light Weight Small Table / Light Weight Wide Table.

**[Dimensions]**



Unit: mm

**Pins**



Unit: mm

■ **Light Weight Table**

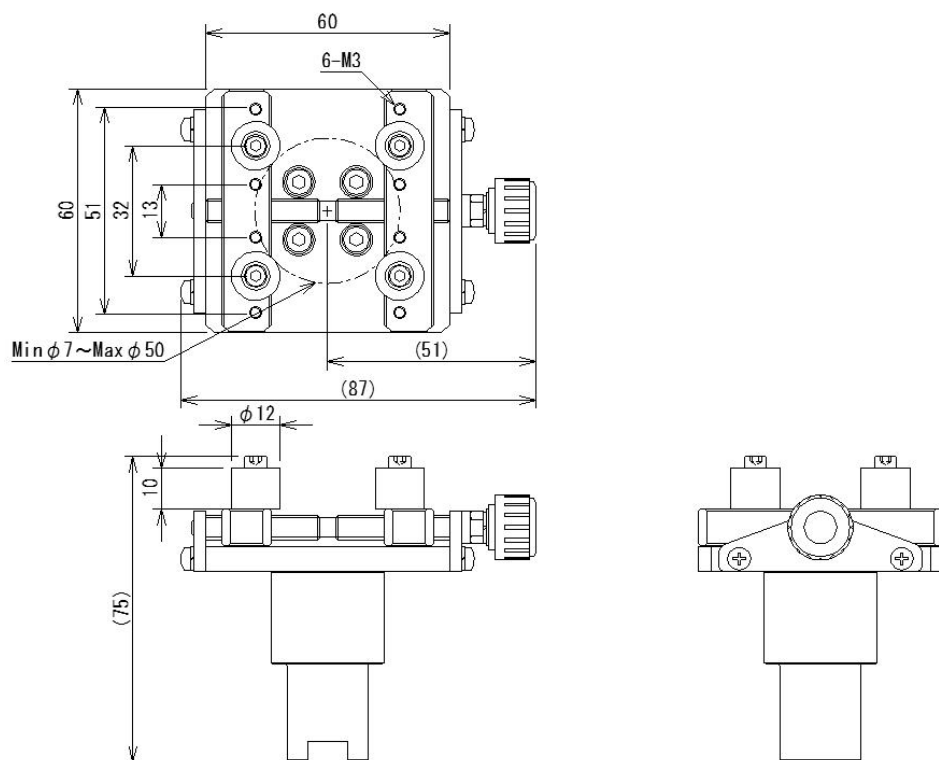
Light Weight Small Table Standard Pin <b>DT-STL</b>	Light Weight Small Table Notch Pin <b>DT-STL-01</b>	Light Weight Small Table Long Clamp Pin <b>DT-STL-02</b>
		
<p>Suitable for measuring small samples such as plastic tubes.</p>	<p>Ideal for firmly fixing samples such as small motors.</p>	<p>Ideal for fixing slim samples such as cosmetic containers.</p>
<ul style="list-style-type: none"> <li>• Light Weight Small Table Capacity: 2N-m Allowable Sample Diameter: φ7 to 50mm Weight: Approx.170g Material: Aluminum</li> <li>• Standard Pin Pin weight: Approx.3g/pcs Pin material: Aluminum and Urethan</li> </ul>	<ul style="list-style-type: none"> <li>• Light Weight Small Table Capacity: 2N-m Allowable Sample Diameter: φ7 to 50mm Weight: Approx.170g Material: Aluminum</li> <li>• Notch Pin Pin weight: Approx.10g/pcs Pin material: Stainless-steel</li> </ul>	<ul style="list-style-type: none"> <li>• Light Weight Small Table Capacity: 2N-m Allowable Sample Diameter: φ7 to 50mm Weight: Approx.170g Material: Aluminum</li> <li>• Long Clamp Pin Pin weight: Approx.8g/pcs Pin material: Aluminum and Urethan</li> </ul>
Light Weight Wide Table Standard Pin <b>DT-STLW</b>	Light Weight Wide Table Notch Pin <b>DT-STLW-01</b>	Light Weight Wide Table Long Clamp Pin <b>DT-STLW-02</b>
		
<p>Suitable for measuring samples such as volume dials.</p>	<p>Ideal for firmly fixing samples such as motors.</p>	<p>Ideal for fixing long and wide samples such as bottle shaped containers and diapers.</p>
<ul style="list-style-type: none"> <li>• Light Weight Wide Table Capacity: 2N-m Allowable Sample Diameter: φ10 to 100mm Weight: Approx.220g Material: Aluminum</li> <li>• Standard Pin Pin weight: Approx.3g/pcs Pin material: Aluminum and Urethan</li> </ul>	<ul style="list-style-type: none"> <li>• Light Weight Wide Table Capacity: 2N-m Allowable Sample Diameter: φ10 to 100mm Weight: Approx.220g Material: Aluminum</li> <li>• Notch Pin Pin weight: Approx.10g/pcs Pin material: Stainless-steel</li> </ul>	<ul style="list-style-type: none"> <li>• Light Weight Wide Table Capacity: 2N-m Allowable Sample Diameter: φ10 to 100mm Weight: Approx.220g Material: Aluminum</li> <li>• Long Clamp Pin Pin weight: Approx.8g/pcs Pin material: Aluminum and Urethan</li> </ul>

\* Select a Torque Tester without the Table attachment DTXS/A-0.5/2N-Z and the required Attachments selected separately.

\* The set of Pins are available for replacement for purchase separately. Refer to page 4.

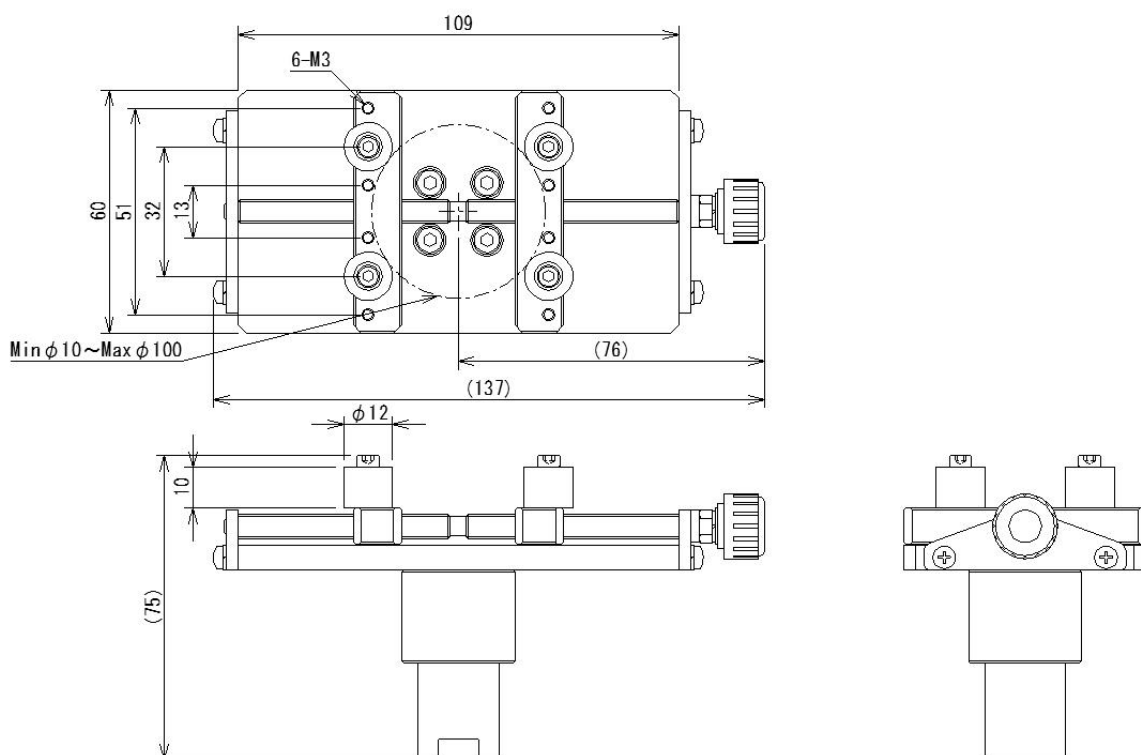
**[Dimensions]**

**DT-STL**




Unit: mm

**DT-STLW**



Unit: mm

■ Pin Chuck

	Feature
	The three claws clamp samples such as wire and round-bar samples.

[Specifications]

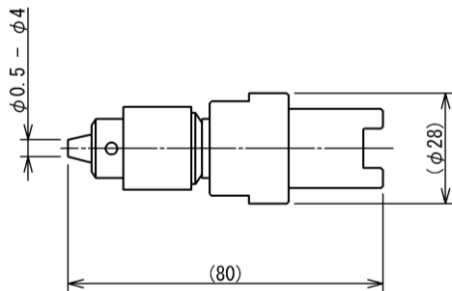
Model	DT-DC-4	DT-DC-6.5	DT-DC-6.5SUS(*1)	DT-DC-13
Capacity	5N-m	10N-m	10N-m	10N-m
Opening width	φ0.5~4mm	φ0.5~6.5mm	φ0.5~6.5mm	φ1.2~13mm
Weight	Approx.190g	Approx.290g	Approx.290g	Approx.670g
Material	Steel	Steel	Stainless-steel	Steel

\* Pin chuck cannot be used for torque gauges with capacity of 0.5N-m.

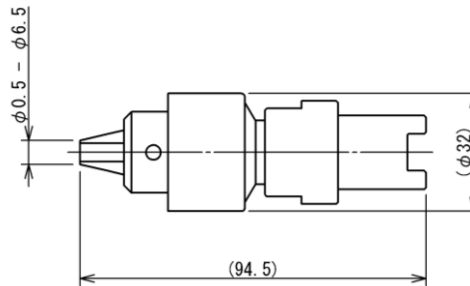
\*1 We recommend using the stainless-steel chuck under the circumstance making metal rust.

[Dimensions]

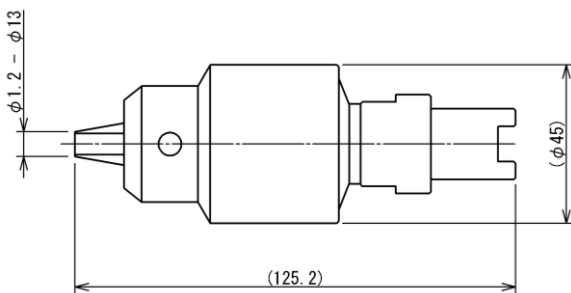
DT-DC-4



DT-DC-6.5/ DT-DC-6.5SUS





DT-DC-13







Unit: mm



■ Spout Pouch Cap Opening Torque Test Fixture

	Features	
	<p>This fixture is designed to be mounted to the DTXS/A series torque tester for spout pouch caps opening torque test. It can be used for packaging beverages such as jellies and juices, as well as refill packaging for cosmetics, shampoos, detergents, etc.</p> <p>Model: <b>SPC-10N</b>            Capacity: 10N-m            Width and depth of the spout neck: 6-26mm each            (*the part to be inserted into the fixture)            Weight: Approx. 1000g</p>	 <p>Testing image</p>

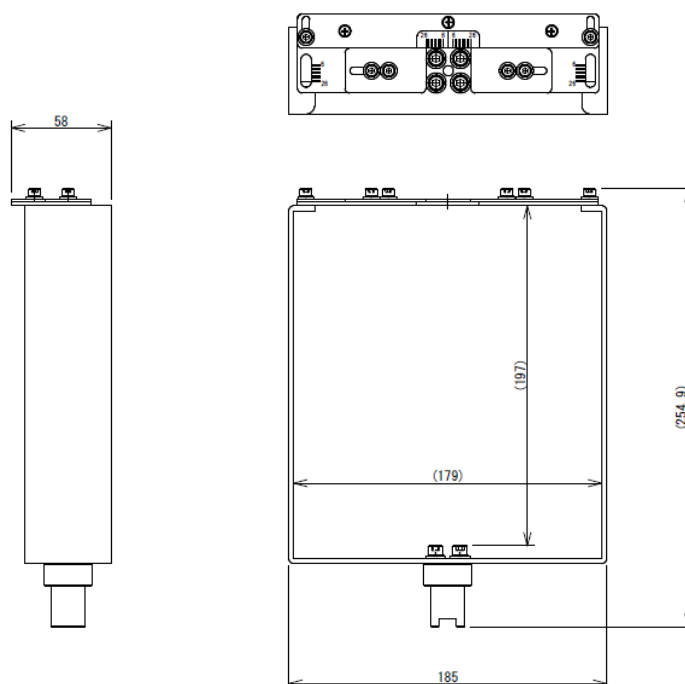
\* Spout Pouch Cap Opening Torque Test Fixture cannot be used for torque gauges with capacity of 0.5N-m.

How to use			
Measure the width and depth of the spout neck	Adjust the positioning adjustment plates	Insert the shaft into the DTXS/A installing slot	Set the sample and measure opening torque
			

\* The spout neck to be inserted into the fixture must have at least two flat and parallel surfaces in order to hold the sample stable.

\* For the sample sizes that cannot be handled by the standard products, we also offer customized services. Please contact us for details.

[Dimensions]



Unit: mm

### [Cautions]

- Information in this document is subject to change without prior notice.
- This document is product descriptions and handling precautions, and do not guarantee various characteristics or safety.
- This product is designed for force measurement purpose only.
- Do not copy and use this content without authorization.
- Some samples may not be suitable to measure with this product.

#### **IMADA CO., LTD**

99 Jinnoshinden-cho aza Kanowari Toyohashi  
Aichi Japan 441-8077  
Tel: +81-(0)532-33-3288  
Fax: +81-(0)532-33-3866  
E-mail: [info@forcegauge.net](mailto:info@forcegauge.net)  
Website: <https://www.forcegauge.net/en/>



Visit our website for more information on a wide range of product specifications, measurement applications and videos.