




Fixing Belt for Operativity Measurement FBO-CFX

- Dedicated fixing belt for the small and flat compression load cell “CFX series” to attach it to your finger or the tool edge
- Convenient to measure sample operating force in an actual usage scene
- Flexibly usable for testing of samples with unique forms or in narrow spaces


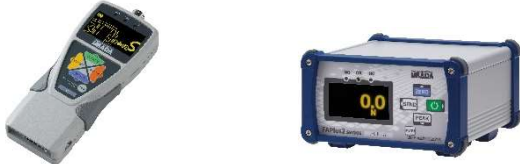


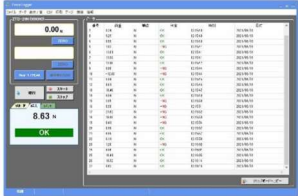


Measuring Procedures		
Mount CFX to the plastic plate.	Attach the urethane cushion on the surface of CFX	Insert the belt into the plastic plate slits and then fix the load cell on the contact point to samples, such as fingers.
		

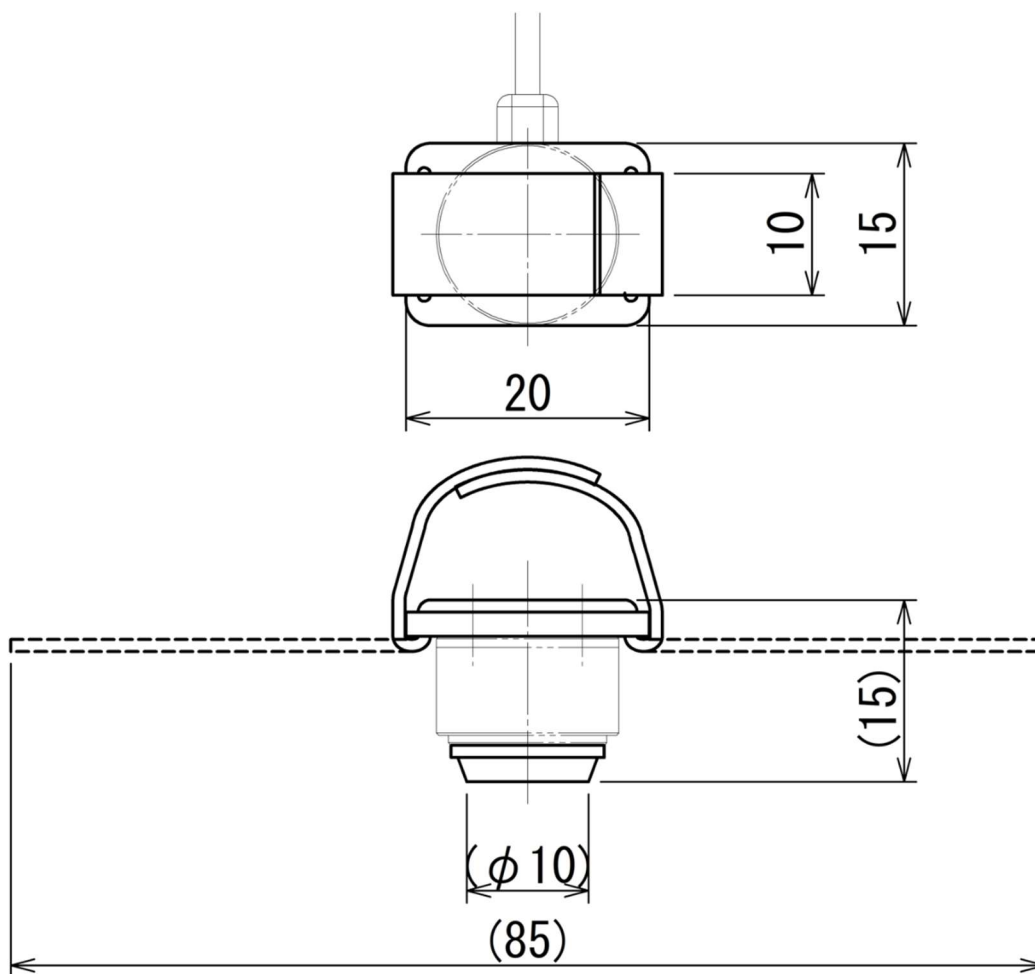
Specifications	
Model	FBO-CFX
Capacity	200N
Dimensions	See [Dimensions]
Weight	Approx. 5g
Accessories	Replacing belt [25cm length] *1

*1 The length of the replacing belt can be extended as customization. Please contact us for details.

* Some other load cells aside from CFX can be mountable as customization. Please contact us for details as well.

Related Products	
<p>Small and Flat Type Load Cell CFX Series</p>	<p>Sensor Interchangeable Amplifier eZT/eFA-Plus2</p>
<p>Compact load cell ideal for measurement in a narrow area. The sensor part is flat and wide so that it can be usable for soft or round samples.</p>	<p>Amplifiers installable with eZ-Connect series load cells. Two options available; eZT, a portable type and eFA-Plus2, a suitable for built-in usage.</p>
	
<p>Separated Sensor Model Digital Force Gauge ZTA-CFX/ZTS-CFX Series</p>	<p>Desktop Force Amplifier FAP2-CFX Series</p>
<p>Portable force gauges with external load cells. The accuracy of this model is higher than its counterpart of eZ-Connect series.</p>	<p>This is an integrated model of FA-Plus2 and CFX series. Unlike eZ-connect series, the load cell is not replaceable, but the accuracy is higher</p>
	
<p>Data Acquisition Software Force Logger</p>	
<p>Inclusive software for force gauges and amplifiers. It allows PCs to save test data such as maximum, minimum and average force from forcegauges</p>	
	

[Dimensions]



Unit: mm

[Cautions]

- The contents may be changed without prior notice.
- This product is designed for measurement purposes only.
- Do not copy the contents without permission.
- This product does not include an amplifier or a load cell.

IMADA CO., LTD

99 Jinnoshinden-cho aza Kanowari Toyohashi
Japan 441-8077
Tel: +81-(0)532-33-3288
Fax: +81-(0)532-33-3866
E-mail: info@forcegauge.net
Website: <https://www.forcegauge.net/en/>



Visit our website for more information on wide product specifications, measurement applications and videos.