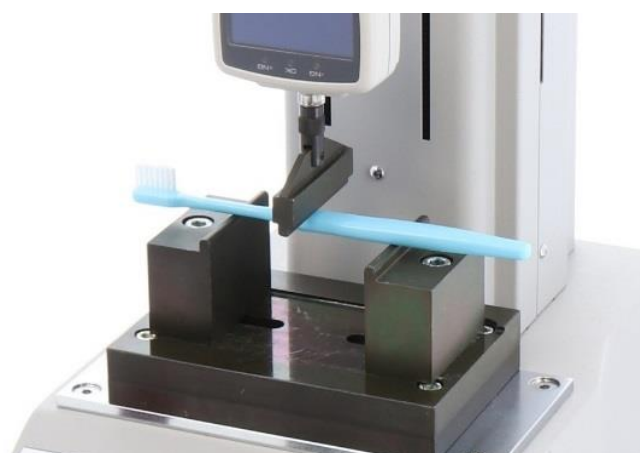


# 3-Point Bending Test Fixture GA-10N/GA-5000N

- Ideal for testing a plate or round bar of metal, glass, ceramic and plastic
- Handles testing up to 5000N
- Offers customized models to perform testing according to a part of ISO and JIS



GA-10N



GA-10N Testing Image

<b>Testing Samples</b>	Metal plates, glass plates, plastic plates, ceramic plates, FRP, plywood, pencils, tooth brushes, PCBs, mobile phones, etc.
------------------------	---

Measuring Procedures GA-10N		
Adjust the position of the bottom blocks to the desired width.	Place the sample over the blocks.	Push with upper anvil to measure.


Specifications		
Model	GA-10N	GA-5000N
Capacity	500N	5000N
Max. Sample Width	60mm	60mm
Opening Width	5 to 60mm	5 to 70mm
Dimensions	See [Dimensions]	
Weight (Upper Anvil) *1	100g	120g
Mounting Screw (Upper Anvil)	M6	M10

\*1 Weight of the attachment is also applied as a load on the force gauge. Consider it when selecting the capacity of a force gauge.


\*2 Option for non-swivel type of upper anvil is available.

\* Ensure safety while testing. Especially round bar-shaped samples may slip or scatter while testing.

### Examples of Product Configuration GA-10N

<p><b>Example 1</b>                      <b>Code: 1G2006A</b> For simple testing up to 500N</p> <p>Digital Force Gauge: DST-500N Motorized Test Stand: MX-500N Optional Attachment: GA-10N</p>	 <p style="text-align: center;">GA-10N Example 2 Image</p>
<p><b>Example 2</b>                      <b>Code: 1G2006B</b> For functional and versatile testing up to 500N</p> <p>Digital Force Gauge: ZTS-500N Motorized Test Stand: MX2-500N Optional Attachment: GA-10N Optional Cable: CB-518 Optional Software: Force Recorder Standard</p>	

### Examples of Product Configuration GA-5000N

<p><b>Example 1</b>                      <b>Code: 1G2007A</b> For functional and versatile testing up to 5000N</p> <p>Digital Force Gauge: ZTS-5000N Motorized Test Stand: MX2-5000N Optional Attachment: GA-5000N Optional Cable: CB-518 Optional Software: Force Recorder Standard</p>	 <p style="text-align: center;">GA-5000N Example 1 Image</p>
--	---

\* Refer to the specification of each product for details.

\* Product configuration varies depending on the shape and characteristic of the sample, and measurement conditions.

\* The recommended capacity of force gauge varies depending on the expected force to be loaded.

\* Ensure safety when testing samples that may scatter.

Mountable Force Gauges for GA-10N		
DST/DSV series	ZTS/ZTA series	FB/PS/PSM series
Digital force gauge with excellent cost performance capable to manage data with PC.	Digital force gauge with high precision, featuring high sampling rate and a variety of useful functions.	Mechanical force gauge for easy handling.
		
Mountable Force Gauges for GA-5000N		
High Capacity ZTS/ZTA series	PSH series	
Digital force gauge with high precision, featuring high sampling rate and a variety of useful functions.	Mechanical force gauge for easy handling.	
		

\* Ensure to select a force gauge with the same mounting screw as the upper anvil's.

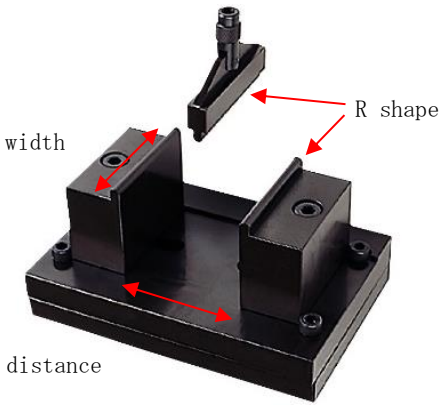

Related Products		
<p>Compression Pin <b>PG-2/3/4/5</b></p> <p>Ideal for compression and penetration testing of small samples up to 200N.</p> 	<p>Compression Plate <b>A-40/60, S-40/60</b></p> <p>Designed for top-load and crush resistance testing up to 500N, available in aluminum (A) and steel (S).</p> 	<p>Urethane Compression Jig [Spherical] <b>UR-8S/8M</b></p> <p>Simulates the feel of a finger with its urethane-made spherical shape, suitable for testing up to 50N.</p> 
<p>Compression Plate for High Capacity [Disk-shaped] <b>PC-5040/5060/5100</b></p> <p>Ideal for compression and break resistance testing that require high capacity up to 5000N.</p> 	<p>Compression Test Fixture <b>PR-500N/2500N</b></p> <p>Suitable for testing durability of retort pouch, heat seal and box shaped samples up to 2500N.</p> 	

### Custom-made Solutions

- ISO 14704: 2000 (JIS R 1601: 2008) [Fine ceramics (advanced ceramics, advanced technical ceramics) Test method for flexural strength of monolithic ceramics at room temperature] (corresponding part only)
- ISO 15732: 2003 (JIS R 1607: 2015) [Fine ceramics (advanced ceramics, advanced technical ceramics) Test method for fracture toughness of monolithic ceramics at room temperature by single edge precracked beam (SEPB) method] (corresponding part only)
- JIS K 7074: 1988 [Testing methods for flexural properties of carbon fiber reinforced plastics] (corresponding part only)

\* We offer solutions to suit your requirements. Contact us for details.

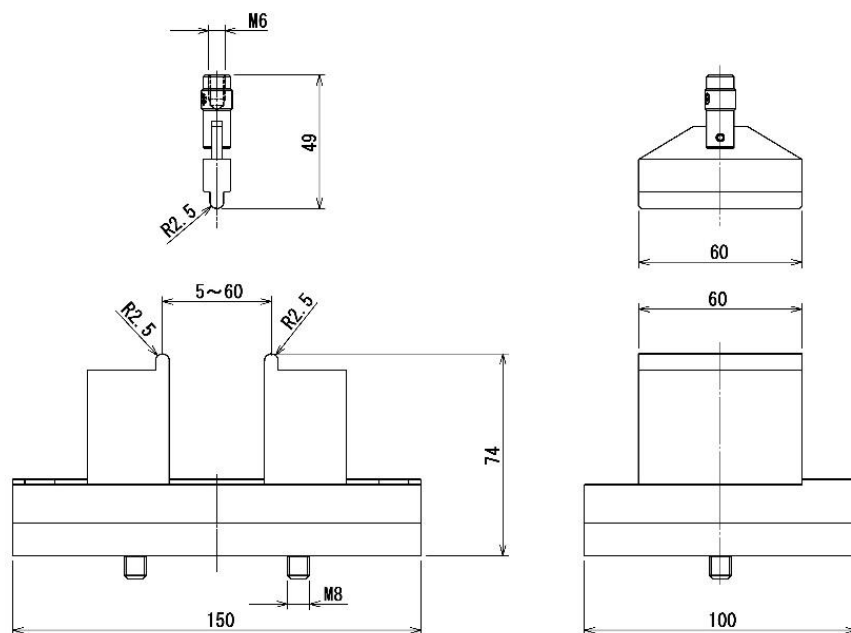
### Optional Products

Changing Dimensions	Improving Safety
	
<p>Dimensions can be changed to suit your testing samples. *1</p>	<p>Interlocking system can be designed to improve safety in operation by controlling motion of the test stand in accordance with the door opening.</p>

\*1 Changes may not be feasible depending on the required size. Contact us for details.

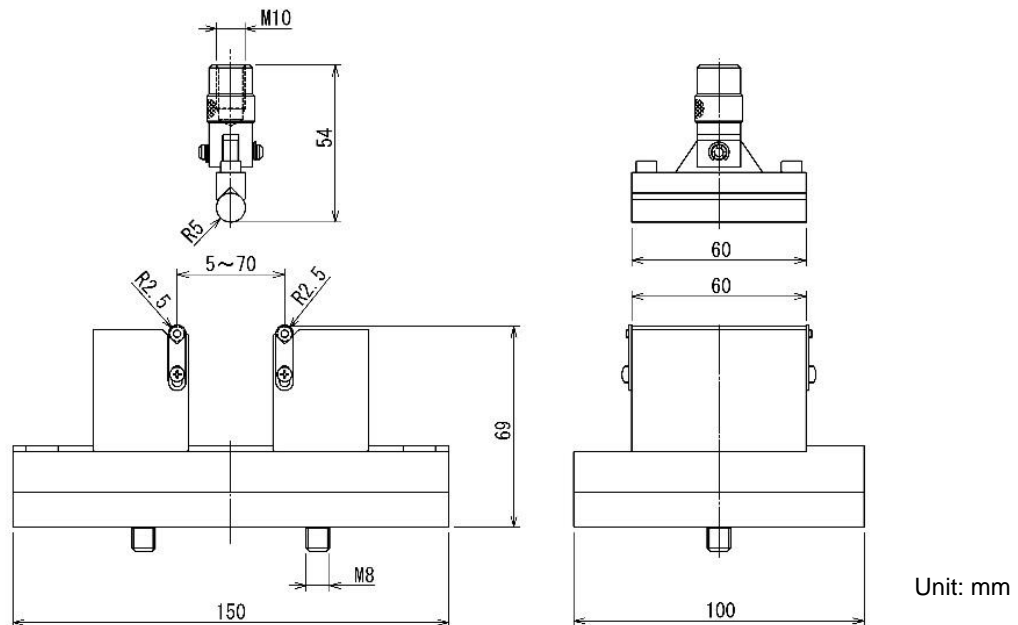
### [Dimensions]

#### GA-10N



Unit: mm

**GA-5000N**



**[Cautions]**

- Information in this document is subject to change without prior notice.
- This document is product descriptions and handling precautions, and do not guarantee various characteristics or safety.
- This product is designed for force measurement purpose only.
- Do not copy and use this content without authorization.
- A force gauge (sold separately) is required to use this product.
- Some samples may not be suitable to measure with this product.

**IMADA CO., LTD**

99 Jinnoshinden-cho aza Kanowari Toyohashi  
Aichi Japan 441-8077  
Tel: +81-(0)532-33-3288  
Fax: +81-(0)532-33-3866  
E-mail: [info@forcegauge.net](mailto:info@forcegauge.net)  
Website: <http://www.forcegauge.net/en/>



Visit our website for more information on a wide range of product specifications, measurement applications and videos.