

# Wedge Grip KC series

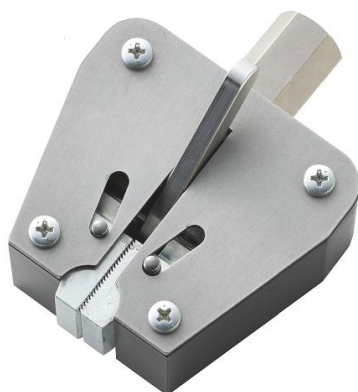
Wedge Grip for gripping samples firmly with self-tightening design  
Allows to grip samples with a single action  
Designed to grip thin and deformable samples including wires and cables



KC-100



KC-1001





KC-5000






Testing Image  
(KC-100)



Testing Image  
(KC-5000)

Fixing jigs for testing (KC-100)		
Fix grip to the measuring shaft	Open the chuck with the lever	Push the lever down to grip samples
		

Fixing jigs for testing (KC-5000)		
Fix grip to the measuring shaft	Open the chuck with the lever	Push the lever up to grip samples
		


Specifications			
Model	<b>KC-100 *1</b>	<b>KC-1001</b>	<b>KC-5000</b>
Capacity	500N	1000N	5000N
Max. sample thickness	8mm	2mm	5mm
Jaw width	15mm	9.8mm	23.8mm
Throat depth	22mm	15mm	26mm
Dimension	See [Dimensions]		
Weight *2	Approx. 330g	Approx. 95g	Approx. 565g
Mounting screw	M6		M10
Mounting part type	Fixed	Switchable between Fixed and Swivel *3	
Mounting part angle		Approx. 13°	Approx. 10°


\* Not designed for slippery samples. Please contact us or authorized distributor for available samples.

\*1 Installation on a test stand is not recommended since the lever contacts the table.

\*2 Weight of the attachment is also applied as a load on the force gauge. Please check the weight when selecting the capacity of a force gauge.

\*3 The mounting type of older KC-1001 and KC-5000 is Swivel. Switching to Fixed is not possible.

Switchable mounting part between Fixed and Swivel (KC-1001, KC-5000)	
	<ul style="list-style-type: none"> <li>• The mounting part can be switched between Fixed and Swivel by tightening/loosening the screw.</li> <li>• The fixed neck prevents wobble when mounted on a vertical test stand and improves sample setting efficiency.</li> <li>• When mounted on a force gauge, swivel neck reduces damage to the sensor due to unbalanced load.</li> <li>• When measuring with a horizontal test stand, fixed neck is recommended for both the force gauge side and the test stand side.</li> </ul>




Example of Product Configuration KC-100		
<p><b>Configuration 1</b>                      <b>Code : 1K2001A</b> Basic tension (tensile) test for capacity up to 500N.</p> <p>Digital force gauge : DST-500N Manual test stand : HV-500NII Option attachment : KC-100 Option attachment : GC-1100</p>	 <p>KC-1001 Configuration 1 image</p>	
Example of Product Configuration KC-1001		
<p><b>Configuration 1</b>                      <b>Code : 1K2002A</b> Functional and advanced tension (tensile) test for capacity up to 1000N.</p> <p>Digital force gauge : ZTS-1000N Motorized test stand : MX2-1000N Option attachment : KC-1001 (2pcs) Option cable : CB-528</p>		
Example of Product Configuration KC-5000		
<p><b>Configuration 1</b>                      <b>Code : 1K2003A</b> Functional and advanced tension (tensile) test for capacity up to 5000N.</p> <p>Digital force gauge : ZTS-5000N Motorized test stand : MX2-5000N Option attachment : KC-5000 (2pcs) Option cable : CB-528</p>		

\*Refer to the specification of each product for details.

\*Product configuration varies depending on the shape and characteristic of the sample, and measurement conditions. Please contact us or authorized distributor for further details.

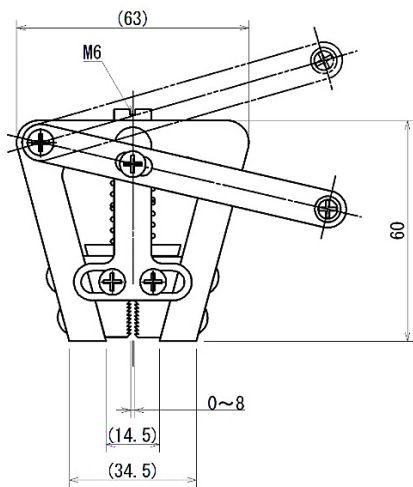
\*The recommended capacity of force gauge is different depending on the expected force to be loaded.

\*Longer stroke Test-stand required/suitable for samples with a high elongation rate. Please contact the authorized distributor or us for more information/concerns.

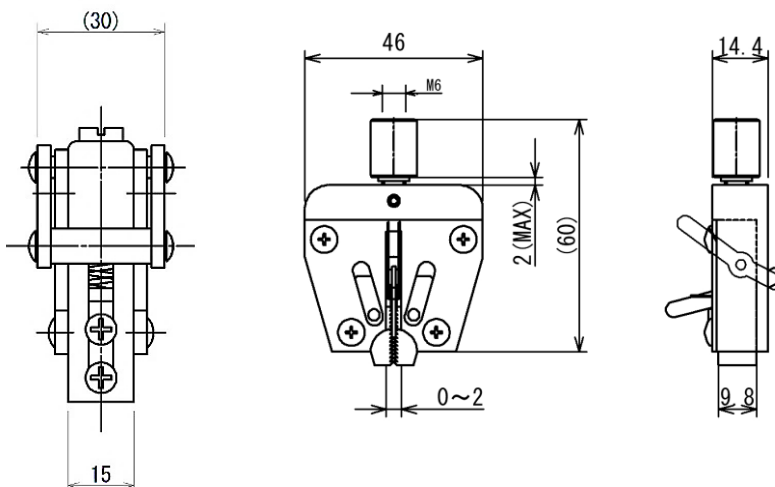
Related Products		
<p>Flat chuck <b>GC-1100/1200/5000, GCF-1200</b></p>	<p>Pantograph grip <b>PGC series</b></p>	<p>Knurled Cam Grip <b>GP-15/30</b></p>
<p>Allows to grip samples of various thickness.</p>	<p>Enables to grip easy to deform samples such as rubber and resin.</p>	<p>Enables to grip easy to deform samples such as resin. It reduces breakage of sample due to cam mechanism.</p>
		

**[Dimensions]**

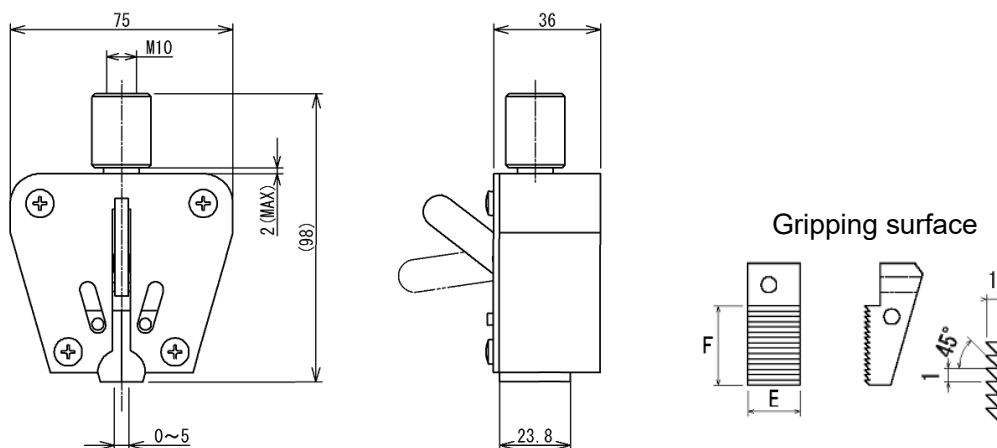
**KC-100**



**KC-1001**



**KC-5000**



**[Cautions]**

- Information in this document is subject to change without prior notice.
- This document is product descriptions and handling precautions, and do not guarantee various characteristics or safety.
- This product is designed for force measurement purpose only.
- Do not copy and use this content without authorization.
- A force gauge (sold separately) is required to use this product.
- Some samples may not be suitable to measure with this product.

**IMADA CO., LTD**

99 Jinnoshinden-cho aza Kanowari Toyohashi  
Aichi Japan 441-8077  
Tel: +81-(0)532-33-3288  
Fax: +81-(0)532-33-3866  
E-mail: [info@forcegauge.net](mailto:info@forcegauge.net)  
Website: <https://www.forcegauge.net/en/>



Visit our website for more information on a wide range of product specifications, measurement applications and videos.