

## Attachment for Acupuncture Needle: Strength and Sharpness **MED-ACU-2N**

Designed to measure strength and sharpness of Acupuncture needle  
Available to measure  $\phi 0.1 \sim 1\text{mm}$  acupuncture needle  
Complies with the corresponding part of JIS standard



Testing Image

<b>Related Standard</b>	-JIS T9301:2016 Acupuncture needle for single use (corresponding part only) -ISO 17218:2014 Sterile acupuncture needles for single use (corresponding part only)
-------------------------	---

Installing of attachments for testing		
Fix the needle to the attachment: Pin Grip CP-150N	(Strength Test) Fix Pin Grip CP-150N to the force gauge and set to press the needle against the T-shaped iron plate	(Sharpness Test) Fix the aluminum foil sheet to the aluminum base plate and prick needle holes

Specifications	
Model	MED-ACU-2N
Maximum Capacity	2N
Applicable Diameter	φ0.1 - 1mm
Dimensions	See [Dimensions]
Weight *1	The side with the Force gauge fixture: approx. 22g
Mounting screw	M6
Components *2	Main Body (inclusive of Aluminum base jig), T-shaped iron plate, CP-150N

\*1 Force Gauge Load is inclusive of attachments: capacity of the force gauge unit means total load added.

\*2 Acupuncture needle and **aluminum foil** shown are not included.

Example of product Configuration	
<p><b>Example1</b> <span style="float: right;"><b>Code:1A2001A</b></span></p> <p>- Measurement up to 2N, complying with the corresponding part of <b>JIS T9301:2016</b> and <b>ISO 17218:2014</b> standard testing.</p> <p>Digital force gauge : ZTS-5N                      Motorized Test Stand : EMX-500N                      Option Attachment : MED-ACU-2N                      Optional Cable : CB-528                      Optional Software : Force Recorder Standard</p>	

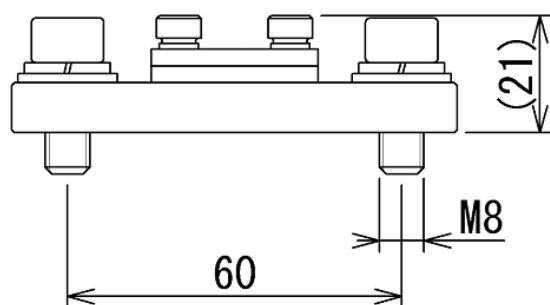
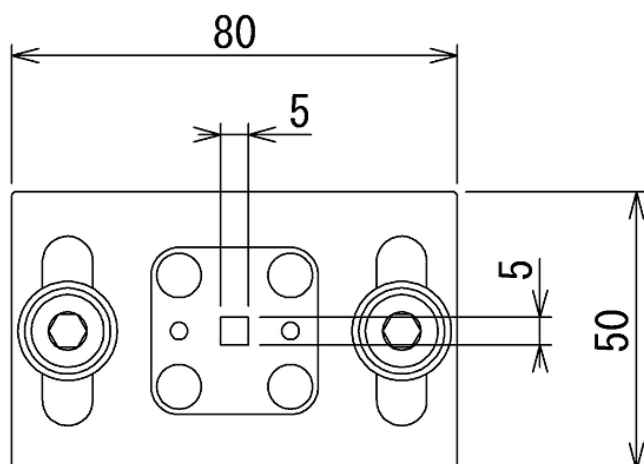
\* Please refer to the specification of each device for further details.

Related Accessories and Jigs		
Pin Grip <b>CP-150N</b>	Needle Testing Jig <b>MED-NPT-200N</b>	Syringe Compression Testing Jig <b>MED-SCT-500N</b>
Ideal Grips for thin wire shaped item testing	For needle bonding strength and pull out testing	For syringe compression testing

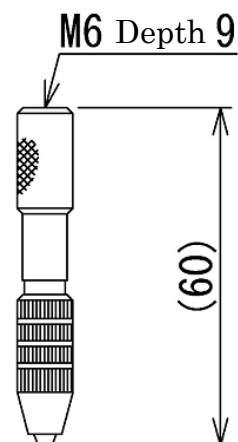
\* Please refer to the specification of each accessory for further details.

## [Dimensions]

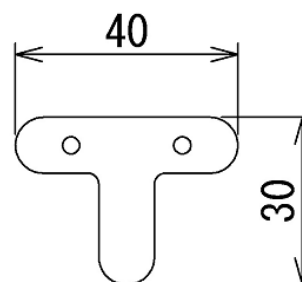
Main Body



CP-150N



T-shaped iron plate



unit: mm

## [Important Notice]

- The specifications in this context may be changed without prior notice.
- A force gauge (sold separately) is required to use this product.
- This product is designed for force testing only. Not suitable for other purpose uses.
- Some items may not be suitable for measurements.
- Duplication and use of this context without prior consent is strictly prohibited.

### **IMADA CO., LTD.**

99 Jinnoshinden-cho aza Kanowari Toyohashi  
Japan 441-8077  
TEL: +81-(0)532-33-3288  
FAX: +81-(0)532-33-3866  
E-mail: [info@forcegauge.net](mailto:info@forcegauge.net)  
Website: <https://www.forcegauge.net/en/>



Visit our website for more information on wide products specifications, measurement applications and videos.