

# High Capacity Compression Jig PC Series (Disc type)

Ideal for high capacity compression / breaking test up to 5000N.

Ensures accurate measurement due to free joint design.

Ideal for compression test of PET bottle or retort pouch.



PC-5100 (left), PC-5060 (middle), PC-5040 (right)




PC-5060 Testing Image

Installing jig for testing		
Fix the jig to the force gauge	Set the sample	Compress to measure

Specifications			
Model	PC-5040	PC-5060	PC-5100
Capacity	5000N		
Board attachment part	φ32mm (Magnet)		
Dimensions	See [Dimension]		
Plate diameter	φ40mm	φ60mm	φ100mm
Weight *1	Approx. 160g	Approx. 330g	Approx. 820g
Mounting thread	M10		

\*1 Weight of the attachment is also applied as a load on the force gauge. Consider it when selecting the capacity of a force gauge.



Examples of Product Configuration PC-5100	
<p><b>Example 1</b>                      <b>Code: 1P2013A</b></p> <p>For functional and versatile testing up to 5000N</p> <p>Digital Force Gauge: ZTS-5000N  Motorized Test Stand: MX2-5000N  Optional Attachment: PC-5100  Optional Cable: CB-528 *1</p>	 <p>PC-5100 Example 1 Image</p>

\* Refer to specifications of each product for details.

\* Product configuration varies depending on the shape and characteristic of the sample, and measurement conditions.





\* The recommended capacity of force gauge varies depending on the expected force to be loaded.

\*1 Durability test with predetermined force and time can be activated by using optional cable.

Mountable Force Gauge	
High Capacity ZTS/ZTA series	PHS series
Digital force gauge with high precision, featuring high sampling rate and a variety of useful functions.	Mechanical force gauge for easy handling.
	

\* Refer to specifications of the individual product for details.

\* Select suitable force gauge to correspond with the mounting screws of attachment.

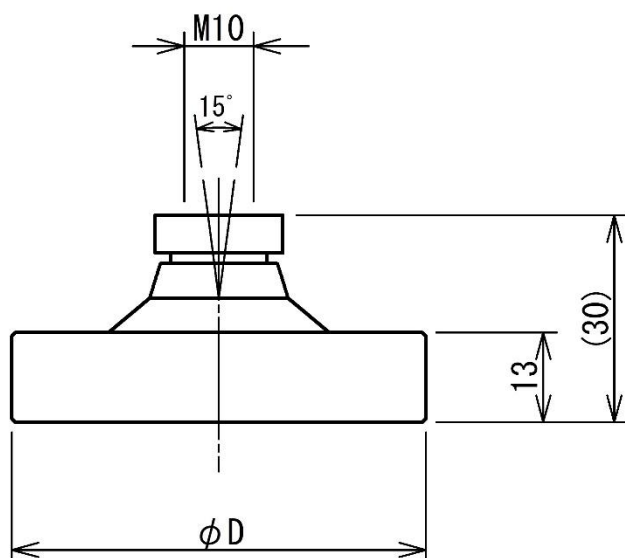
Related Products		
High Capacity Compression Jig [Rectangle type] <b>SQ series</b>	High Capacity Compression Jig [Spherical type] <b>SP series</b>	Durability Test Fixture <b>PR-500N/2500N</b>
Ideal for high capacity compression/ breaking testing up to 5000N. They can contact a test samples closely due to a free joint design.	For high capacity compression and breaking test up to 5000N.	Ideal for durability tests for retort pouch, heat sealed package, up to 2500N.
		
Conversion Adapter <b>CA series</b>		
For mounting a M10 screw attachment to a M6 screw thread of a force gauge.		
		

\* Refer to specifications of the individual product for details.

**[Custom made solutions]**

We offer custom made options including change of diameter, materials (stainless only), or adding air vent and slit machining. Please contact us for details.

**[Dimension]**



MODEL	φ D
PC-5040	40
PC-5060	60
PC-5100	100

Unit: mm

**[Cautions]**

- Information in this document is subject to change without prior notice.
- This document is product descriptions and handling precautions, and do not guarantee various characteristics or safety.
- This product is designed for force measurement purpose only.
- Do not copy and use this content without authorization.
- A force gauge (sold separately) is required to use this product.
- Some samples may not be suitable to measure with this product.

**IMADA CO., LTD.**

99, Jinnoshinden-Cho, Aza, Kanowari, Toyohashi,  
Aichi 441-8077, JAPAN

Tel: +81-(0)532-33-3288

Fax: +81-(0)532-33-3866

E-mail: [info@forcegauge.net](mailto:info@forcegauge.net)

Website: <https://www.forcegauge.net/en/>



Visit our website for more information on a wide range of product specifications, measurement applications and videos.