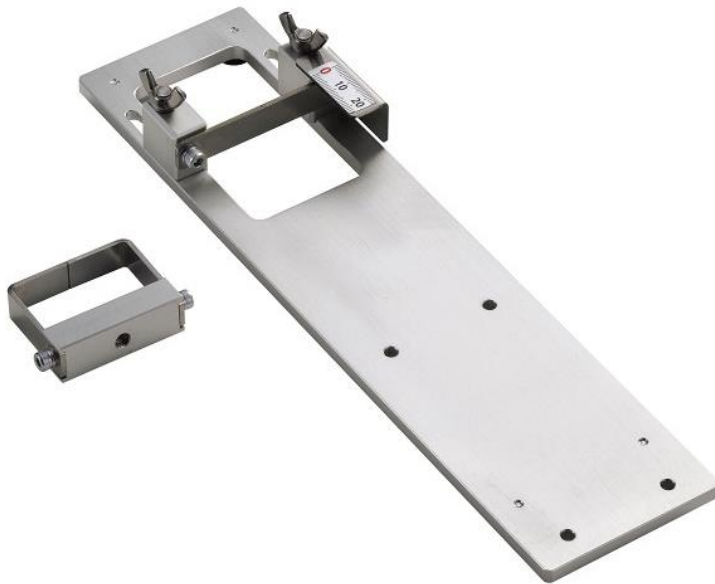


Pinching Force Measurement Jig PCA-150N

- Pinching and opening (spreading) action-force measurement jig for small size objects.
- Designed to measure a variety of industrial, medical, and daily use products such as: - Pinch and Double handle tools - Forceps, Nippers, Pliers, Clamps, Pincer and Tongs.
- The scale attached helps easy measuring widths adjustment.
- Measurement with simple steps of only mounting a force gauge, and lightweight to carry.



PCA-150N




Applicable Samples	Forceps, Tongs, Clamps, Pliers, Pincers, Nippers, Vernier-calipers, Chopsticks, etc.
---------------------------	--

How used Example			
Screw onto the Measuring Shaft	Mount Force Gauge to the jig base	Adjust the pinching width with the scale	Pinch to apply force from both sides

Specification	
Model	PCA-150N
Capacity	150N
Max. Pinching widths of the Sample	43mm
Max. Pinching widths	5~15mm
Max. Spreading section widths of the jig	1~15mm
Dimensions	Refer to the diagram
Total weight / (Upper jig weight) *1	Approx. 360g / (Approx. 50g)



*1 Weight of the attachment is also applied as a load on the force gauge. Consider it when selecting the capacity of a force gauge.

Examples: Product configuration	
<p>Example 1 Code: 1P2012A</p> <p>Basic Operation Measurement up to 150N</p> <p>Digital force gauge: DST-200N Optional attachment: PCA-150N</p>	 <p style="text-align: center;">Example 2 Image</p>
<p>Example 2 Code: 1P2012B</p> <p>With an internal data management function. Measurement up to 150N</p> <p>Digital force gauge ZTS-200N Optional attachment: PCA-150N</p>	



* Refer to the specification of each product for details.

* Product configuration varies depending on the shape and characteristic of the sample, and measurement conditions.

* The recommended capacity of force gauge varies depending on the expected force to be loaded.

Compatible Force gauges	
<p>DST/DSV Series with capacity 50N or over *1 (Digital Force-Gauge)</p>	<p>ZTS/ZTA Series with capacity 50N or over *1 (Digital Force-Gauge)</p>
<p>Cost-effective with data management facility with PC</p>	<p>Various internal functions with high responsiveness support accurate measurements</p>
	

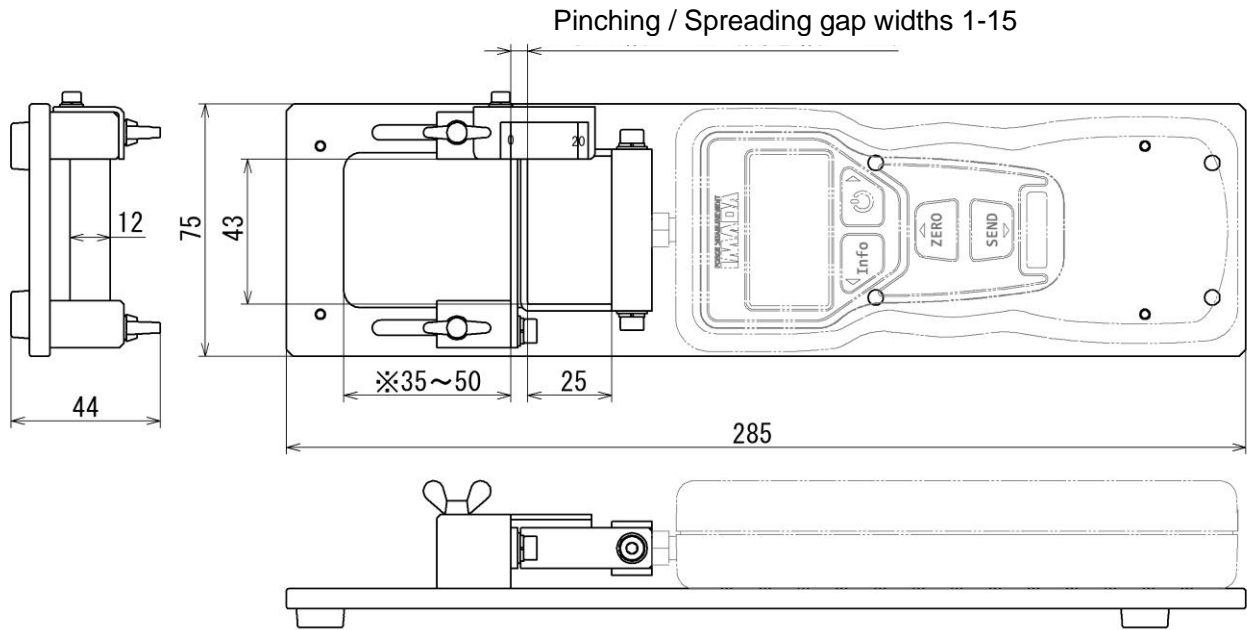
*1 Recommended range that weight of the attachment is also applied as a load on the force gauge.

Related Products	
<p>Acupuncture Needle: Strength and Sharpness Test MED-ACU-2N</p>	<p>Load cell: Two-wheeler Vehicles' Handbrake Tests PK1-500N</p>
<p>Designed to measure the strength and sharpness of the Acupuncture needle.</p>	<p>A dedicated load cell for measuring Handgrip brake force of the two-wheeler vehicle.</p>
	

Possible range of custom made	
Max Sample Widths**	To be confirmed upon inquiry
Min. Pinching Widths	2mm
Max. Capacity**	To be confirmed upon inquiry

** For us to confirm accurate details and options, please provide details of your requirements in advance.

[Dimensions]



Unit: mm

[Caution]

- Information in this document is subject to change without prior notice.
- This document is product descriptions and handling precautions, and do not guarantee various characteristics or safety.
- This product designed for force measurement purposes only.
- Do not copy and use this content without authorization.
- A force gauge (sold separately) is required to use this product.
- Some samples may not be suitable to measure with this product.

IMADA CO., LTD.

99, Jinnoshinden-cho, Aza, Kanowari, Toyohashi
Aichi 441-8077, JAPAN
Tel: +81-(0)532-33-3288
Fax: +81-(0)532-33-3866
E-mail: info@forcegauge.net
Website: <http://www.forcegauge.net/en/>



Visit our website for more information on a wide range of product specifications, measurement applications and videos.