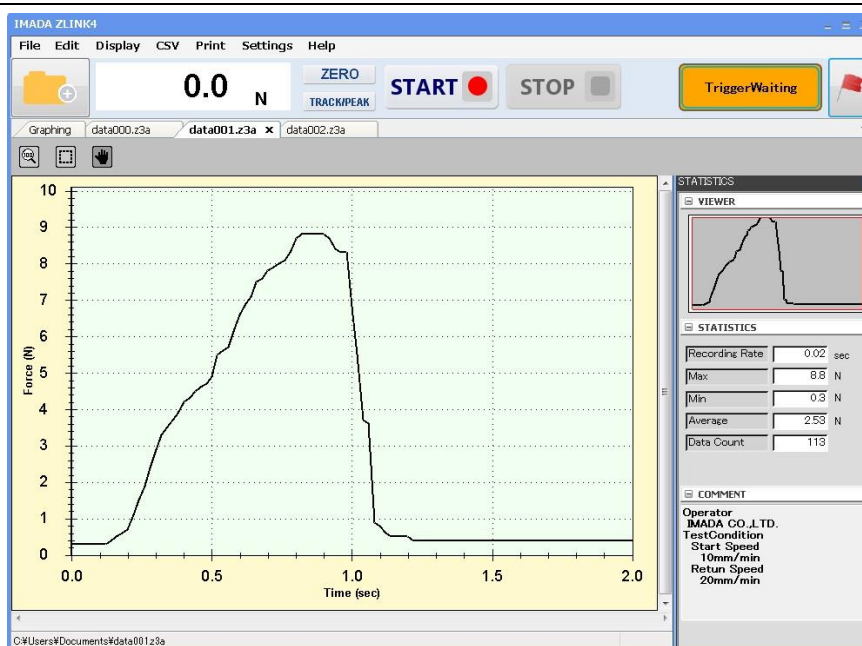


# Force-Time Graphing Software ZLINK4

- Data can be transmitted to plot the force-time graph easily.
- Trigger function enables to start/stop recording automatically.
- Automatic save function can secure data with ease.



Display image

Main Functions	
Trigger function	Data can be recorded automatically by setting up the START/STOP value.
Graph scaling function	The graph can be zoomed in/out, or scroll to check the details.
Statistical calculation	Maximum/minimum/average values are automatically calculated.
Comment function	Comments can be inserted on the graph to record the test condition.
Print	Graph, statistics value and comment can be printed out as report format.
CSV file converting function	Recorded data can be converted into CSV format.
Preview saving function	Graph can be saved in various format. (e.g. Word, Excel and PDF)
Force gauge setting	The setting of DSV/DST series force gauge can be changed via software.

## [Software Display Function]

### - Graph zooming function

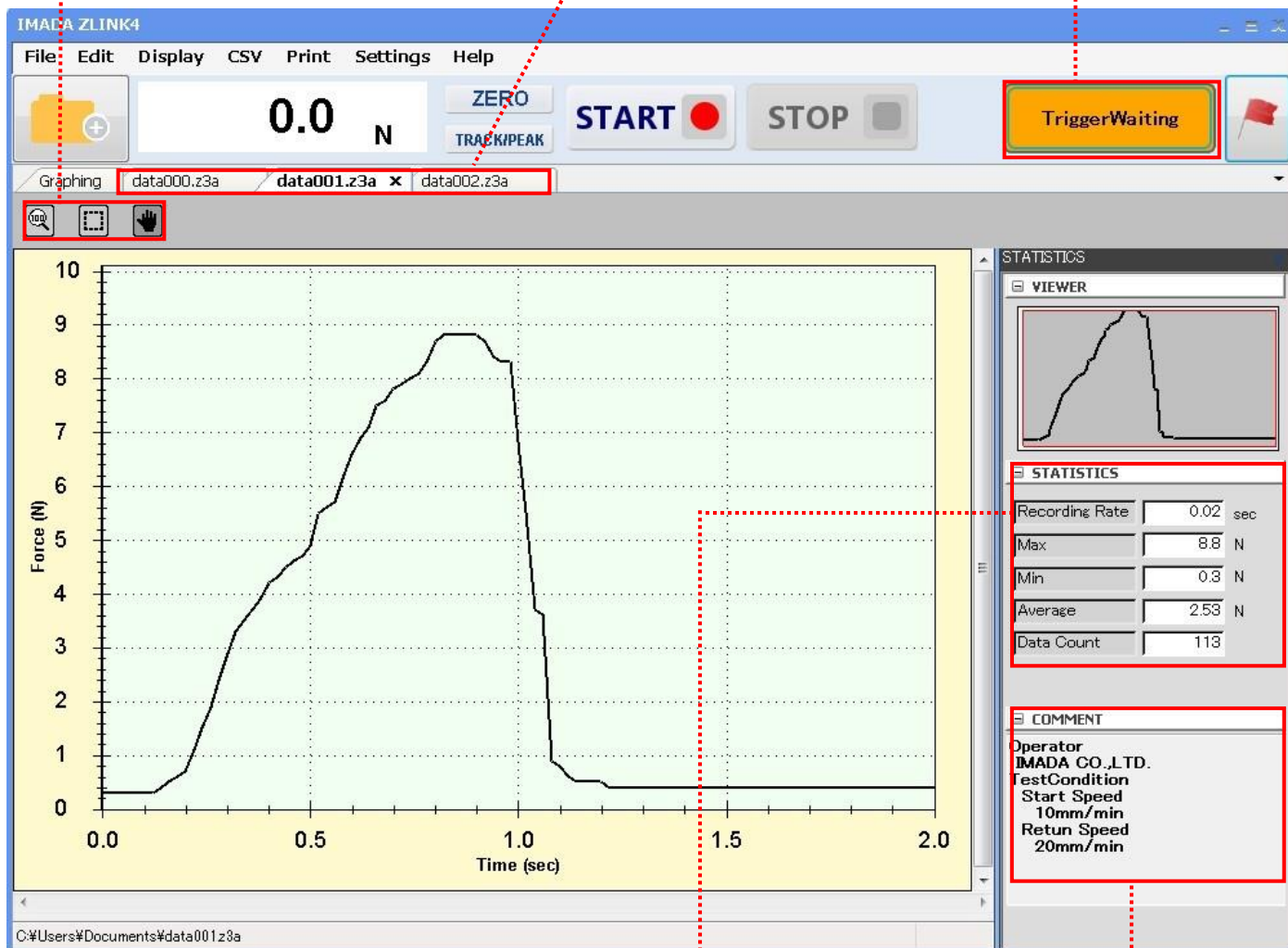
The graph can easily zoom in/out and scroll for analyzing.

### - Tabs

You can compare different graphs easily.

### - Trigger function

The software will automatically record the graph according to the set value.



### - Statistical calculation

Max, Min, and Avg values can be automatically calculated.

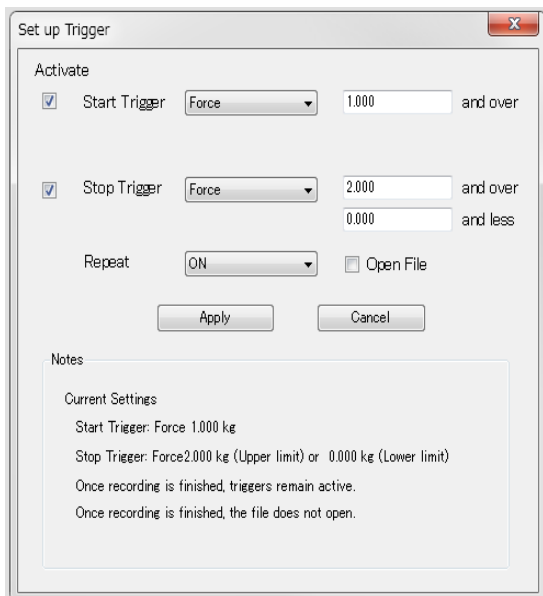
### - Comment function

You can insert necessary comments to the graph for easy record.

### Other Features

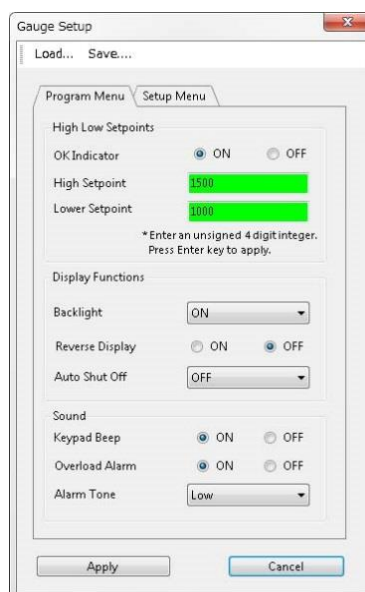
#### Trigger function

The software can automatically start/stop recording according to the set values. Time can be also set as the trigger.



#### Force gauge setting

When connecting the software with a DSV/DST force gauge, the setting can be changed from the software.



### Output Functions

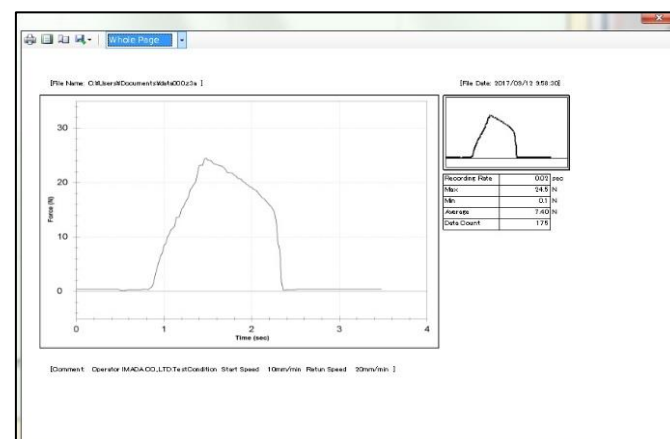
#### CSV format converting






- Recorded graph data can be converted into CSV format.
- It is also possible to add new data to an existing CSV file.

	A	B	C	D	E	F	G	H
1	MAX FORCE =	327						
2	MIN FORCE =	-19						
3	AVERAGE FORCE =	84.8						
4	UNIT =	N						
5	DATA COUNT =	79914						
6	RECORDING RATE =	0.0005						
7	FILE DATE =	6/1/2020 9:46:09 AM						
8	COMMENT =							
9	MARK POINT ON =	---						
10	MARK POINT OFF =	---						
11	THRESHOLD =	---						
12	1ST PEAK FORCE =	---						
13	2ND PEAK FORCE =	---						
14		0						
15		0						
16		0						
17		0						
18		0						
19		0						
20		0						

#### Print/Data output

- Recorded data can be saved as Word, Excel, and PDF format.
- Graphs can be use as image files and paste into file.
- The recorded data can be print out with graph, date, time, statistical value, and comments to form a complete report.



Specifications				
Model	ZLINK4			
Sampling rate	Max. 50 data/sec (50Hz)			
Resolution	Force resolution is determined by a force gauge's capacity. (Signed 4-digit) (e.g. For force gauge with capacity 5N, the resolution will be 0.001N)			
Functions	Trigger function, Statistics calculation, CSV format conversion, Printing, Displaying data recorded in ZLINK3 (*1) Comment function, Force gauge setup (*only for DST/DSV series)			
Output	Word, Excel, PDF format			
Languages	Japanese, English			
Compatible force gauges (Existing model)	DST/DSV series 			
Required cables	Supplied USB cable			
Compatible force gauges (Old models*2)	DS2 series 	Z2/ZP series 	HTG2 series 	DTX2 series 
Required cables	Optional cable CB-203	Optional cable CB-204	Optional cable CB-204	Optional cable CB-204

\* Contact us for compatibility of other models.

\*1 You can convert data recorded in ZLINK3-E into ZLINK4 format using a supplied converting software.

\*2 Old models require RS-232C cables.

Operating Environment	
OS	Windows 8.1/10/11
Hardware	CPU: 1GHz or higher Memory: 2GB or more Hard disk (Data storage area) :10GB or more
Platform	Microsoft .NET Framework 4.6 or later
Execute environment	Microsoft Internet Explorer 6.0 or later Windows installer 3.1 or later
Image size	Resolution 1024×768 pixel or more

**[Cautions]**

- Information in this document is subject to change without prior notice.
- This document is product descriptions and handling precautions, and do not guarantee various characteristics or safety.
- This product is designed for force measurement purpose only.
- Do not copy and use this content without authorization.
- A force gauge (sold separately) is required to use this product.
- This product is protected by Universal Copyright Convention and Japanese Copyright Act.
- Returns are not acceptable. Check the specification, working conditions and operating environment before purchase.

**IMADA CO., LTD.**

99, Jinnoshinden-Cho, Aza, Kanowari, Toyohashi,  
Aichi 441-8077, JAPAN  
Tel: +81-(0)532-33-3288  
Fax: +81-(0)532-33-3866  
E-mail: [info@forcegauge.net](mailto:info@forcegauge.net)  
Website: <http://www.forcegauge.net/en/>



Visit our website for more information on a wide range of product specifications, measurement applications and videos.